



Shi karabka Translator Without Borders (TWB) be dā karabka riwan muradēnze bawoma bana nasha tēlambe wa kuru fasaribe wa cidawu kanjimalibe wa kuru karabkawa kēndaram futēbewa, kuru karabkawa dunya be riwan murandinza bawoma so ro sudin.

## ASHIRWA FASARIYE AMWA FASARI KĒNDOMASO RO ASHIRNZE KEN 1

### NZUNDUWA FASARIYE KURU MUNDUNZĒWA

#### Ayi shi Fasari dā?

Shi fasari dā mana ciyewa tēlam fallin tēlam gadero faltē.

#### Lauwunēwa fasaribe.

**Ngawodē zēwayinna ro:** Fasartē ngawo manatēmadē tamozena ben Shi fasarima dā batawu kam manatēma be ladin dazē, hangalgēnazē darejiya, awo ndusoye gulzēnadē wa gulzē. Adē dā shima ngēwu ro faidatē winno.



**Kēla fallaro:** Manamadē be manajin kuru shiye fasarjin kēla fallaro. Adēwa ngēwuso ro kareyya cidabe masammanne lan tudin.



**Turinna Fasartin:** Kakkadi tɛlam fallin kɛratin kuru sha tɛlam gaden fasartin.



**Tatabtɛyinna Fasari Kɛndo:** Shi Fasarima dɛ batawu kɛrtɛmaye din nabce au dazɛ manamadɛ ye manajinna shiye kɛla tilowanna ro, 'tatabsɛwu', sɛwonzɛ dɛ ro fasarzɛ.



Fasari dɛ cida dowo faidawa linta shi done dawariya kuru itagattɛwa muradɛzɛna. Zawalla adɛa gayi ilmunum fasariye wa yirayi.

### **Darasɛ num itagattɛro dawartɛne**

Dawari dasɛ num gattɛ nankaro, bayanna mane kuru hangalgɛnane:

- Mauduwu do kɛladin manatindɛ
- Kalma laa masammanne au nguro shin faidatayinbama kuru mananzawa
- Waneye awoa karuwu lejinna mbeji au jawawuwa
- Na do nyiye cidadɛ diminna
- Am nya Kɛrɛntɛwu wa

### **Dawu dasɛ numbe din**



## Ngawo cudadē ben

- Kɛlaro cistɛ.
- kɛlanɛmro ciskɛne
- Kam laa ro manane waneye darasɛ dɛ zauro fangamma

Bayanna gade kɛla kakkadi ashir be adin au futu shi Translators Without Borders ye cida kanjimalbe suro yalagɛdi Nigeriya ye din banajindɛ noturo manɛminna, websitende au andeya fandoram adɛa ziyarne: [nigeria@translatorswithoutborders.org](mailto:nigeria@translatorswithoutborders.org)



Shi kakadɛ bakta adɛ bana kanjimalibe karabka EU (ECHO) ye IOM min, shi karabka hijirawube (UN migration agency), kuru bana UK ye wa gomnati UK ye. Ra'ayuwa suro kakkadi adɛ yen bayantɛna dɛ wande gotinyi, futuyiman, ra'ayu European Union ne ro, au ra'ayuwa suron gultɛna dɛ wande shima ra'ayu maila gomnati UK ye ro gotinyi. Sandi European Commission na kuru gomnati UK ye dɛ dawunba futu shi bayan suro adin da'ana dɛa faidatana din.



**TRANSLATORS  
WITHOUT BORDERS**

Shi karabka Translator Without Borders (TWB) be dɛ karabka riwan muradɛnze bawoma bana nasha tɛlambe wa kuru fasaribe wa cidawu kanjimalibe wa kuru karabkawa kɛndaram futɛbewa, kuru karabkawa dunya be riwan murandinza bawoma so ro sudin.

## ASHIRWA FASARIYE AMWA FASARI KENDOMASO RO ASHIRNZE KEN 2

### KAKKADIRO IKKO-A MA'ANA-A

Sa fasari ciye dimin maa awowa manatin dɛ ruotɛ ro tangne. Affiso ro hangal gɛnaane, kam manatɛ maye awo gulzɛna wo so kalkal ro fasartɛ nankaro. Bayan zauro faida'a ma dɛ kasarrata ro ruone nya banazɛ nankaro.

- Bayanna jili faaida'a ro hangal gɛnaane, misallo su so, na so, kawu kɛntagɛ ye so, kuru loktu so.
- Kalimawa zawu au nzundu zamanne'a kɛllata so dɛa tangne.
- Diwal kɛngaye ndikate awo gultɛna-a awo fuwun gultin-ayen tande.
- Kam manama dɛ ro dazɛ gulle nyiye awo gulzɛna dɛ kawu njesɛnɛmin ro fasarnɛmiya ra'amma maa.
- Nyiye kazɛmo ngɛla-a hal ngɛla-a fɛlene kuru awowa ada amdɛye wazɛna so ro hangal gɛnaane.
- Rekod kalkal ma gɛnane

## Awowa dimin-a dimba-a

| Diye   | Wande dimi  |
|--|---|
| Naptɛ kam kɛn auwalme yen manane                                 | Wande "shiye wono" gullumi.   |
| Nyiye karno kalimawabe-a kuru futu kam dɛye manazɛna-a darajane. | Wande nyiye ra'ayinɛm yimi.   |
| Nyiye bayan (ngɛlaro nyiro yita asutɛgɛ) mane mɛradɛnɛma maa.    | Nyiye 'awo ngai gulzɛ" soro katɛne.                                   |
| Nyiye ma'ana kalima-a, bayan-a, jumla wi'a ye so ye              | Wande affima awo kam manamadɛye gulzɛnaro yirami, kollɛmi au fallɛmi. |

Kakkadiro ikko-a ma'ana kalimawabe-a asutè dè zauro sa fasari dimin lan faida'a.

Kawu fasari dimin ro, nyiye none kalima-a kalima-a dè ma'ananza gade gadero waljin, misalro:

- Am kemfen hakku cidibe dioma soye kèla "fando" yen manazayin shi doni ma'ananzè diwal do cidi laa ro letèye, kuru adègaima "fando" cida GBVye dè ma'ananzè katapwa do takkalla adaye ba ro dioye ro waljin.
- "Nzètkawo" am so'a suro kamfuye lan awo diwi ngadartè ro yita fatègè lan maa kèla ruo-a lèman-a yitkawoyen manajin, kuru adègaima cidama nzètkawobe do kèla nzètkawo nduliyen cidajin dèro, ma'ananzè rotè batti-a, aziyatè-a kuru njokkunotè-a ro yitkawo.  
Arauwwa do sandiya faidatè jumla kori ro tedin gultè baa dèye kamma fatsèyin, saunzè dè arauwwa kori dè faidatè dè am laa ro ma'ana gade fai cin misalro "SEA" nasaran ma'anazè kuluwu njiye kura ro waljin susu Turusu men Aziyatè-a Njokkunotè-a ye ro.

Tèlam dè fafaltin awowa anyi ro wuntèiyya:

- Jili tèlambe
- Nasha
- Ngèli-a junsu-a kam manamaye.

# KAKKADIWA KULASXNE KALIMAWA ASUTA-A NÈM ZAWU MA'ANA KALIMAWABE-A KÈSKETÈGÈ NANKARO

- TWBye kalimaram tèlamma kadaye CCCM-a, MHPSS-a, Nzètkawo-a, kuru Fatowa garta-a, nashawa Cidibe-a Kèngantiwa gadeso-aye kuru COVID-19-a nankaro. <https://glossaries.translatorswb.org/nigeria/>
- Cidawu nasha laa taganasbe notè tèlambe'a.
- Kitawu ma'ana kalimawa tèlam fato'beye
- Malèmma maaranta fato'be
- Am lamardèn mukkonza'a kaduwube-a adabe do notènza tèlambe'a so

# Karewa cidabe Ma'ana Kalimawabe ro Cistaabe

Karewa cidabe Ma'ana Kalimawabe ro Cistaabe fandemin na:

<https://unterm.un.org/UNTERM/portal/welcome>

<https://www.proz.com/search/>

<http://termcoord.eu/>

<http://www.2lingual.com/>

<https://www.linguee.com/>

<http://context.reverso.net/translation/>

Bayan gade kela shi gonem kenjo adayen au futu Translators without Borders ye cidawa kanjimalibe ro yalagadizena Najeriyabe lan bana sedin da nonemiya ra'amma maa, websayitnde ziyarane au naane: [nigeria@translatorswithoutborders.org](mailto:nigeria@translatorswithoutborders.org)



Shi kakade bakta adɛ bana kanjimalibe karabka EU (ECHO) ye IOM min, shi karabka hijirawube (UN migration agency), kuru bana UK ye wa gomnati UK ye. Ra'ayuwa suro kakkadi adɛ yen bayantɛna dɛ wande gotinyi, futuyiman, ra'ayu European Union ne ro, au ra'ayuwa suron gultɛna dɛ wande shima ra'ayu maila gomnati UK ye ro gotinyi. Sandi European Commission na kuru gomnati UK ye dɛ dawunba futu shi bayan suro adin da'ana dɛa faidatana din.



Shi karabka Translator Without Borders (TWB) be d  karabka riwan murad nze bawoma bana nasha t lambe wa kuru fasaribe wa cidawu kanjimalibe wa kuru karabkawa k ndaram fut bewa, kuru karabkawa dunya be riwan murandinza bawoma so ro sudin.

# ASHIRWA FASARIYE AMWA FASARI KƏNDOMASO RO

## ASHIRNZE KEN 3

### TADAWA DO SURO FASARI CIDA KANJILAMIBEN

Daras  adin awo nganzat na d  shima adawa fasaribe d a bayant  kuru futu sha t dinna. Tartippa kuru fasari ng la k ndo d  amsowa banaz  banawa ngalwo sandiye murad zanad a sawandin. Ashir zakt  d  namtiya, awowa wata/battisowa waneye t wandin.

#### Ayi nankaro shi Tartippaso d a murad wa ye?

1. Tartippa cidabe d  zaumaro faida'a.
2. Fasari ngalwo d  amsowa bananz  banawa ngalwo sandiye murad zana d a sawandin.
3. Ashir zakt  d  namtiya, awowa wata/battisowa waneye t wandin. Shi tartippa muhimmin d  sandima:



1. **KA'IDAWA NODAWUBE NZUNDUWUBE:** Fasariwu so dɛ wɔktuyi son futu ka'idawanza nadawube fulezɛnadɛ yayi ro kuru hangal kwallata'an cida kanjimalibe din kalkallin kuru ka'idawa WANDE NDUMARO ZAUWA GENATɛNYI zasawu.
2. **NOTɛ CIDA KɛNDOBE:** Cida do raksa jirezan sandinna suro tɛlammabe din shido raksa kalkallo ilmunza kɛndobewa kuru sandiya shin allamtɛnawa dɛa sadɛ.
3. **NDUMARO GOTɛBAWA RO:** Wande ndumaro gowomi wɔktu bayandɛ kalakkɛminna indikate ambe din.
4. **KALKALLO:** Ilmunumma faidatɛne wɔktuyin yayi jiremaro walle manado kalmawabea kuru kawulibe so dɛ ro.
5. **KALANGAYI NUMMA NONE:** Wande gasaanyi, dawu cidanza fasaribe din, cida a gadero misallo buru habtɛwa, kashimowa, au galawa.
6. **ILMU NZɛRO:** Ilmunumma nzunduwa kasadɛ gone yirayi.
7. **KɛLAKɛL ILMUWUBE:** Sawa a num cidabewa darajane kuru sandiya banane dawu cidanzabe din.
8. **ASIR GɛRATɛ:** Wande bayan do dawu cidanumbe din fandɛmadɛ am ro gullumi au yim laa waneye nyiro isɛ mburo waljiya ashirdɛ gultinna zawalla firtɛna dɛa gayye

Bayanna gade kɛla kakkadi ashir be adin au futu shi Translators Without Borders ye cida kanjimalbe suro yalagɛdi Nigeriya ye din banajindɛ noturo manɛminna, websitende au andeya fandoram adɛa ziyarne: [nigeria@translatorswithoutborders.org](mailto:nigeria@translatorswithoutborders.org)



Shi kakadɛ bakta adɛ bana kanjimalibe karabka EU (ECHO) ye IOM min, shi karabka hijirawube (UN migration agency), kuru bana UK ye wa gomnati UK ye. Ra'ayuwa suro kakkadi adɛ yen bayantɛna dɛ wande gotinyi, futuyiman, ra'ayu European Union ne ro, au ra'ayuwa suron gultɛna dɛ wande shima ra'ayu maila gomnati UK ye ro gotinyi Sandi European Commission na kuru gomnati UK ye dɛ dawunba futu shi bayan suro adin da'ana dɛa faidatana din.





Shi karabka Translator Without Borders (TWB) be dā karabka riwan muradēnze bawoma bana nasha tēlambe wa kuru fasaribe wa cidawu kanjimalibe wa kuru karabkawa kēndaram futābewa, kuru karabkawa dunya be riwan murandinza bawoma so ro sudin.

## ASHIRWA FASARIYE AMWA FASARI KENDOMASO RO

### 4 NEK EZNHISA

# KAZIYA NA CIDA KANJIMALIYE TADIN DĀA ASUTĒ

Cidawu fasaribe dā sambu yayi ro asuza kuru ka'idawa cida kanjimalibe dāa saliwu, ka'idawa cida kanjimalibe asalube dā, ka'idawa kanjimalibe dunya be kuru huwom hakku adamganabe.

## Ayi shi bana kanjimalibe dā?

**Sshi bana kamjimalibe dā**

**Bana ngawo fitenaben tinna**

- Fitena/Riliji
- Tajirwa kēmandebe susanama

**Bana Amwa do bana muradēzanaso dā ro**

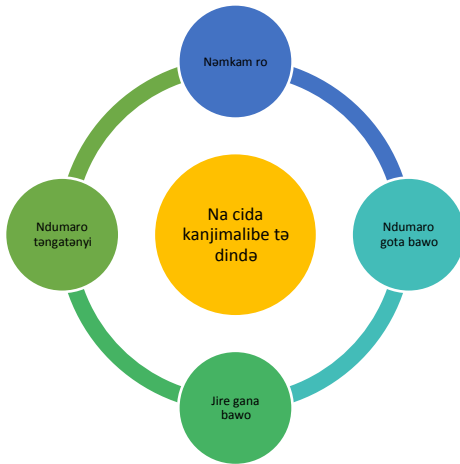
- Bayanna
- Kurun
- Kareyya
- Kareyya banabe njado
- Jamibe
- Ilmube

**Kam ciyina dā**

- Karabkawa lardebe
- Karabkawa larde diyabe
- Gomnati
- UN
- Ndu gade kuru?



## Ayi Iyeye Shi Ka'idawa Cida Kanjimalibe Da?



**Nemkam:** Kaziyi adamganabe da ndan kara yayi shiro banawa tade.

**Ndumaro gota bawo:** Cidawu kanjimalibe ro mbu ro walzana wande sandiye ndumaro gozanyi.

**Jire gana bawo:** Cida kanjimalibe da murada bas ro kendo da mbu.

**Ndumaro tangatanyi:** Cida kanjimalibe da wande siyasa, fandi, askarra au nya gadesoro tangatanyi.

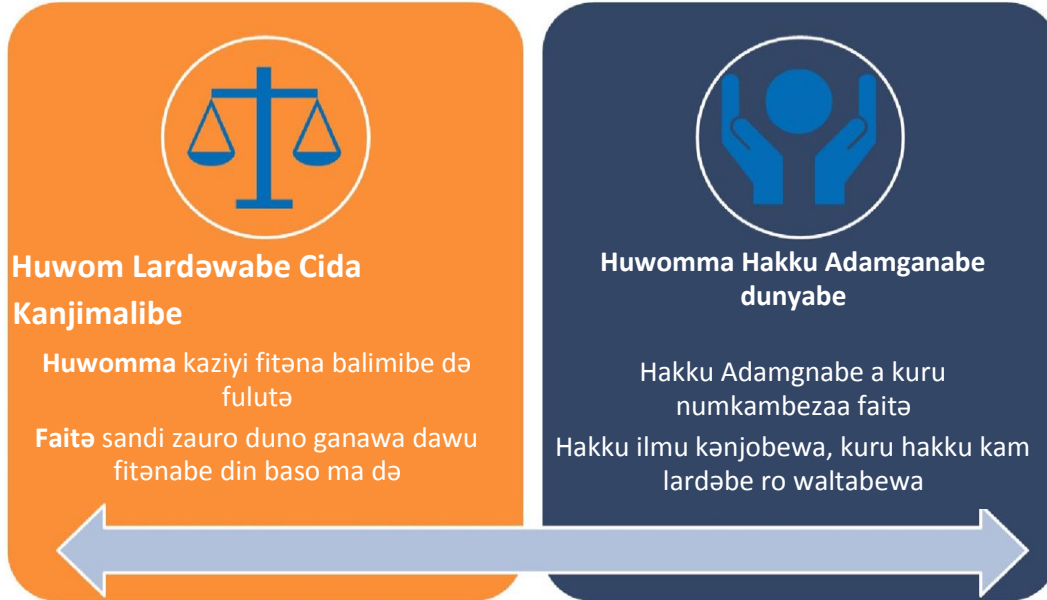
## Tartibba kura Cida Kanjimalibe da

Bulawa a kuru jami do sandiya fitanabe zamzanaso da hakkunza bana sandin kalkal fandobewa kuru muradanzan kalkal mbeji.

- Bulawa a kuru jami do sandiya fitanabe zamzanaso da zawalnza bana kanjimalibe fandobe woku muradana din fandobe mbeji.
- Bulawa a kuru jami do sandiya fitanabe zamzanaso da sandiya futu wataro fitanadaye lezanyi kuru zauro dawartanaye, karashimye, kuru tajirwanza gana dalilnzā da katab cidawu kanjimalibeso da ye gozanada ro.
- Bulawa a kuru jami do sandiya fitanabe zamzanaso da hakkunzawa noza kuru hakkunza bayan fondobewa kuru sawari sandiya lezanaso tadin din cinza mbejiro walza.
- Bulawa a kuru jami sandiya fitanabe zamzanaso da zawalnza nalewan kuru nzunda burunza habtābe futu sanda nan ratābe mbeji
- Bulawa a kuru jami do sandiya fitanabe zamzanaso da bana kalakallewa, bana sandiya banajinna sawandin
- Bulawa a kuru jami do sandiya fitanabe zamzanaso da banawa ngalwowa tamaza karabkawa da kunbalin asuzana kuru awoa lejinna.
- Bulawa a kuru jami do sandiya fitanabe zamzanaso da bana sandiye muradanzanawa sawandin na cidawu allamgata murshewa yen kuru cidawu kalanzakowa yen.

- Bulawa a kuru jami do sandiya fitɛnabe zamzɛna banatinso dɛ karabkawado sandiya banazayinso dɛ futu sandɛnaro, basaribawo ro kuru adanzan kalkallo razuwanzaso dɛa rozana

# Faida Huwomma lardawabe cida kanjimalibe a kuru Huwom Hakku Adamganabe



## Fasariudā woku fasari sadinna awo fitana suwudinna ro hangal ganaza

1. Awo gultanawa fasarne shara kamtāba wo ro
2. Wande dawu fitana da be ro gaammi
3. Kanadima ro walle
4. Na da nzalifo ba ro wallonowa, samno daa kamgane

Bayanna gade kela kakkadi ashir be adin au futu shi Translators Without Borders ye cida kanjimalbe suro yalagadi Nigeriya ye din banajinda noturo manaminna, websitende au andeya fandoram adaa ziyarne: [nigeria@translatorswithoutborders.org](mailto:nigeria@translatorswithoutborders.org)



Shi kakada bakta ada bana kanjimalibe karabka EU (ECHO) ye IOM min, shi karabka hijirawube (UN migration agency), kuru bana UK ye wa gomnati UK ye. Ra'ayuwa suro kakkadi ada yen bayantana da wande gotinyi, futuyiman, ra'ayu European Union ne ro, au ra'ayuwa suron gultana da wande shima ra'ayu maila gomnati UK ye ro gotinyi. Sandi European Commission na kuru gomnati UK ye da dawunba futu shi bayan suro adin da'ana daa faidatana din.