

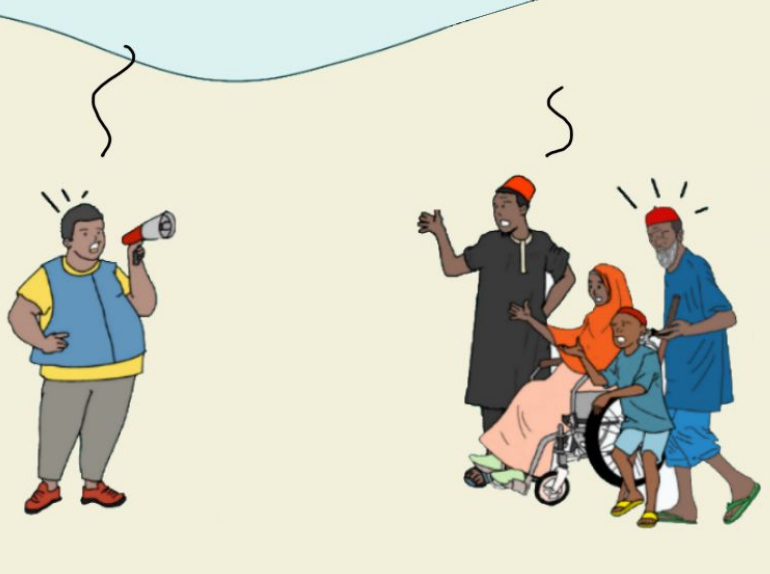
# Dya naja vur tsukwa lagu du mji vur paktsinikir u mulmu

Aga thlir cipcukur nur ivir nda baɗa ca cipcukur

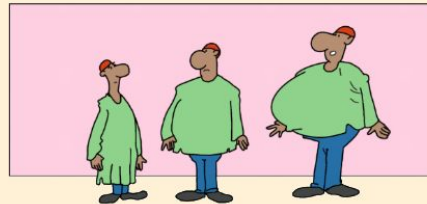


Asuka ga ntu ubui  
arbabal mai  
lu thlir aga sur chu tsi yer  
kuga ta sursim munagu  
Nkani ntu / kwalera

Ndir aga nya nur ki yer  
Na'iya ivir nghaba ndir  
nur WASH mai  
Na'iya asini su odi mai  
Na'iya ayu lagur thlia  
labar odi digu vidiyo baɗa  
dahu



Digal pathlu acittu mji ca mai- Nyar Hausa aga  
Kanuri acittu mai



Mulmu nanda ayu:  
- Ndir aga dahu u nya pam-pam  
- Labar aga fotu ngu atsuku  
lu thlir aga sur hun ndir baɗa nya nur  
ki yer