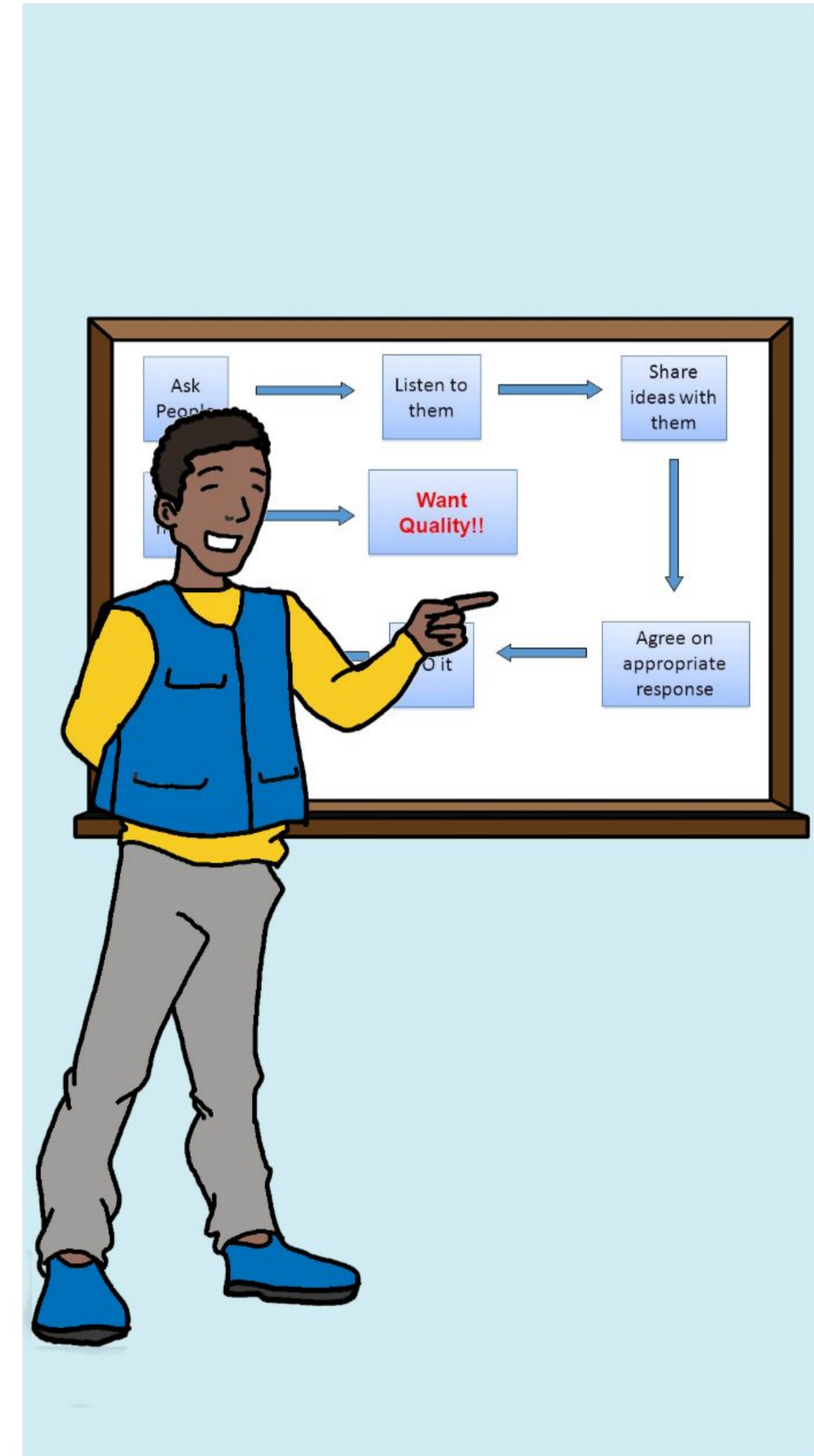
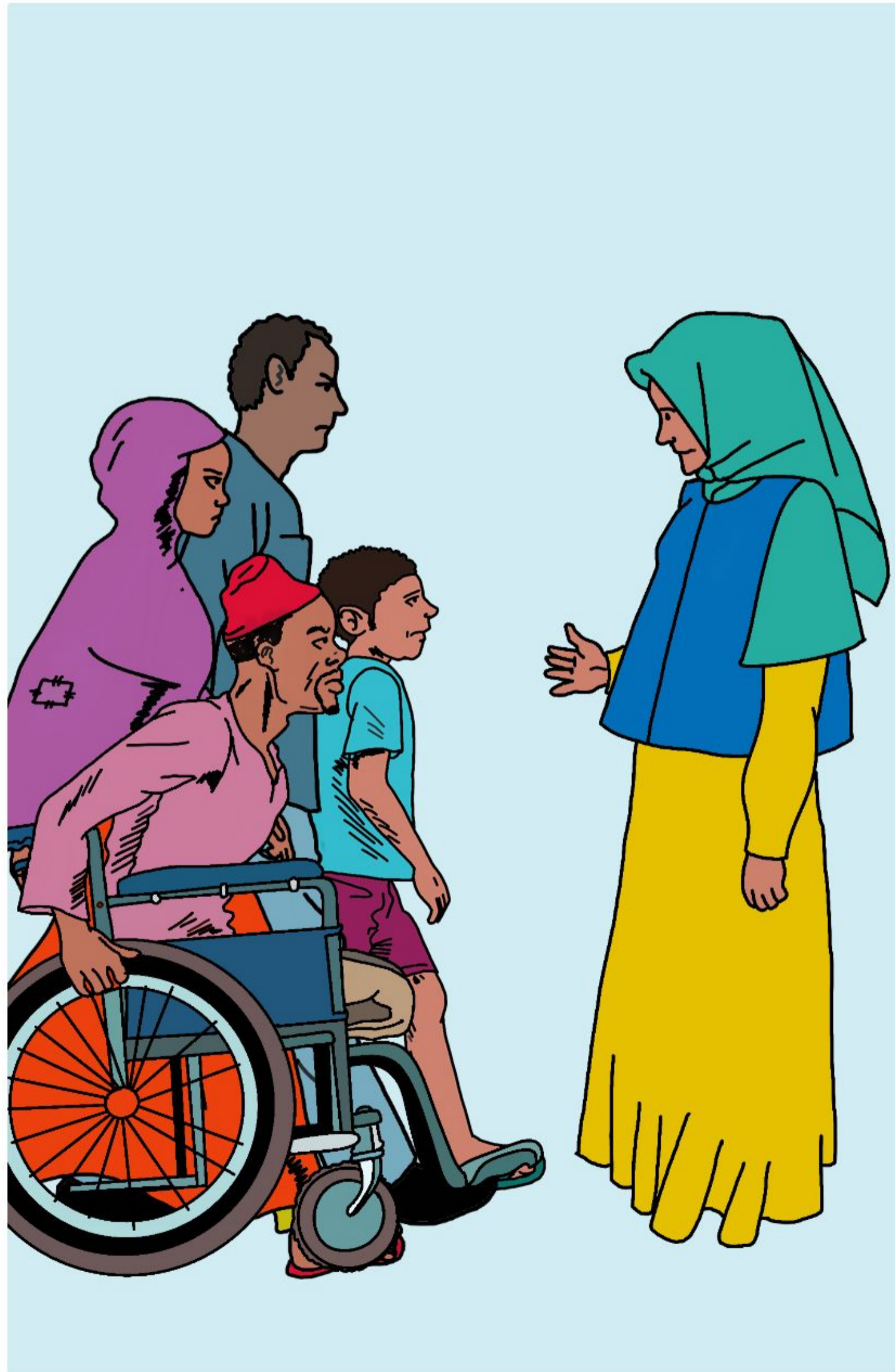
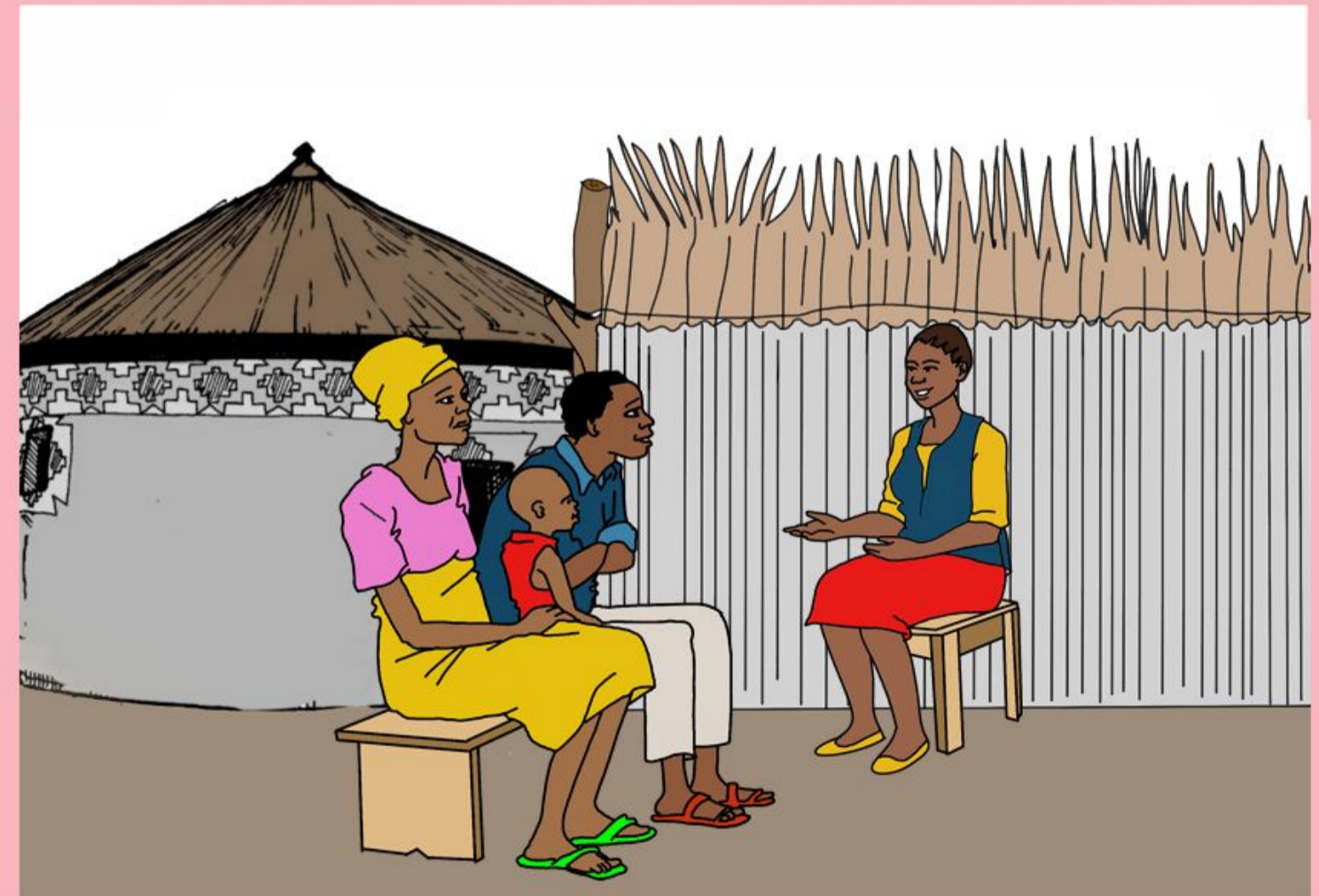
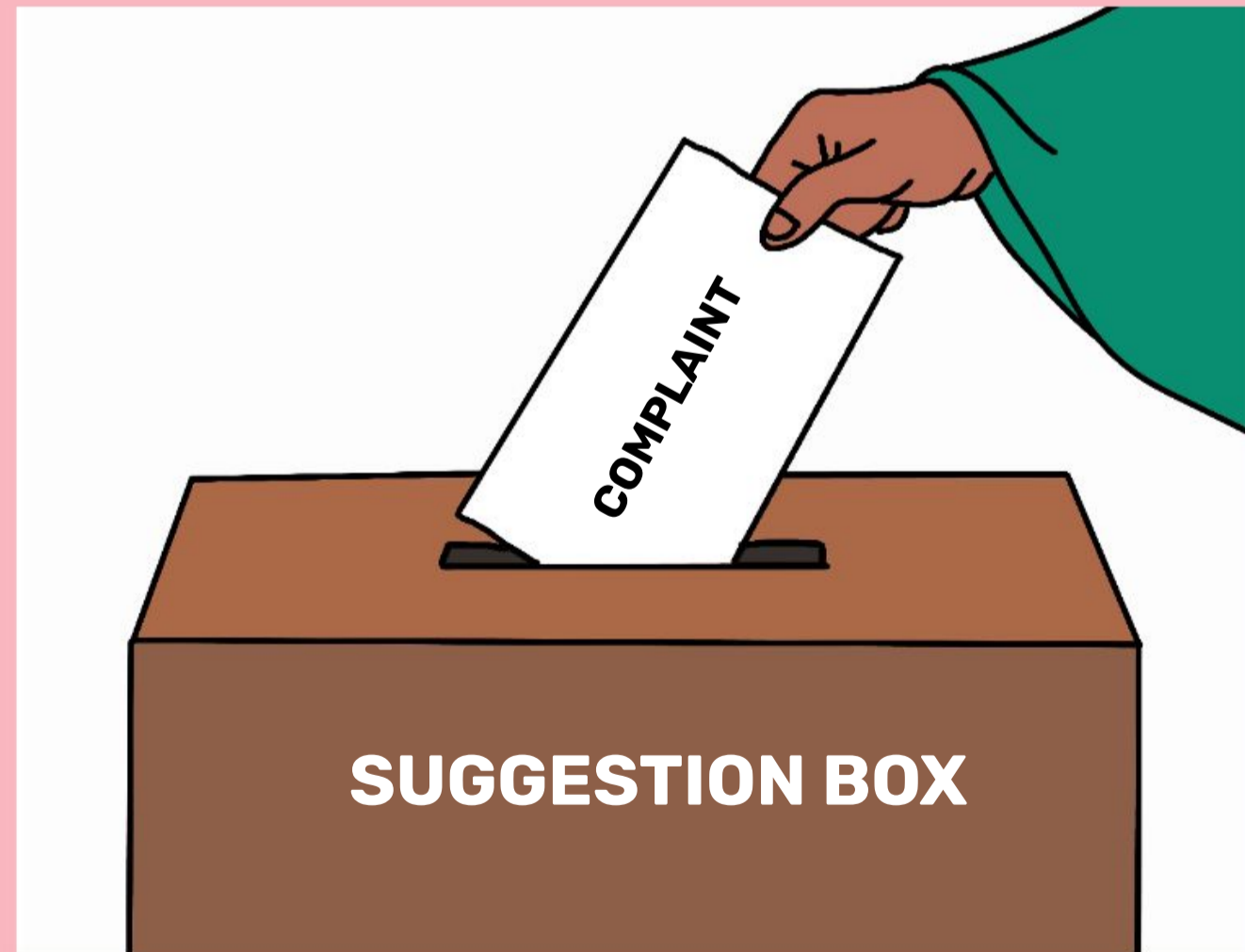


Tsari jabol boji bee hokkol jawabu (CFM) dum laawol on ko jabata, lincita nden jaaba ko ummatore wuro mari ko dow  
kuude mballa innu aadama, mballinde ko dabiya



Laabiji hokkuki jawabu: godfo be godfo, akwati boji, hedi laabi koosol daande, laayi waya jee caahu, sawral bee ummatore wuro

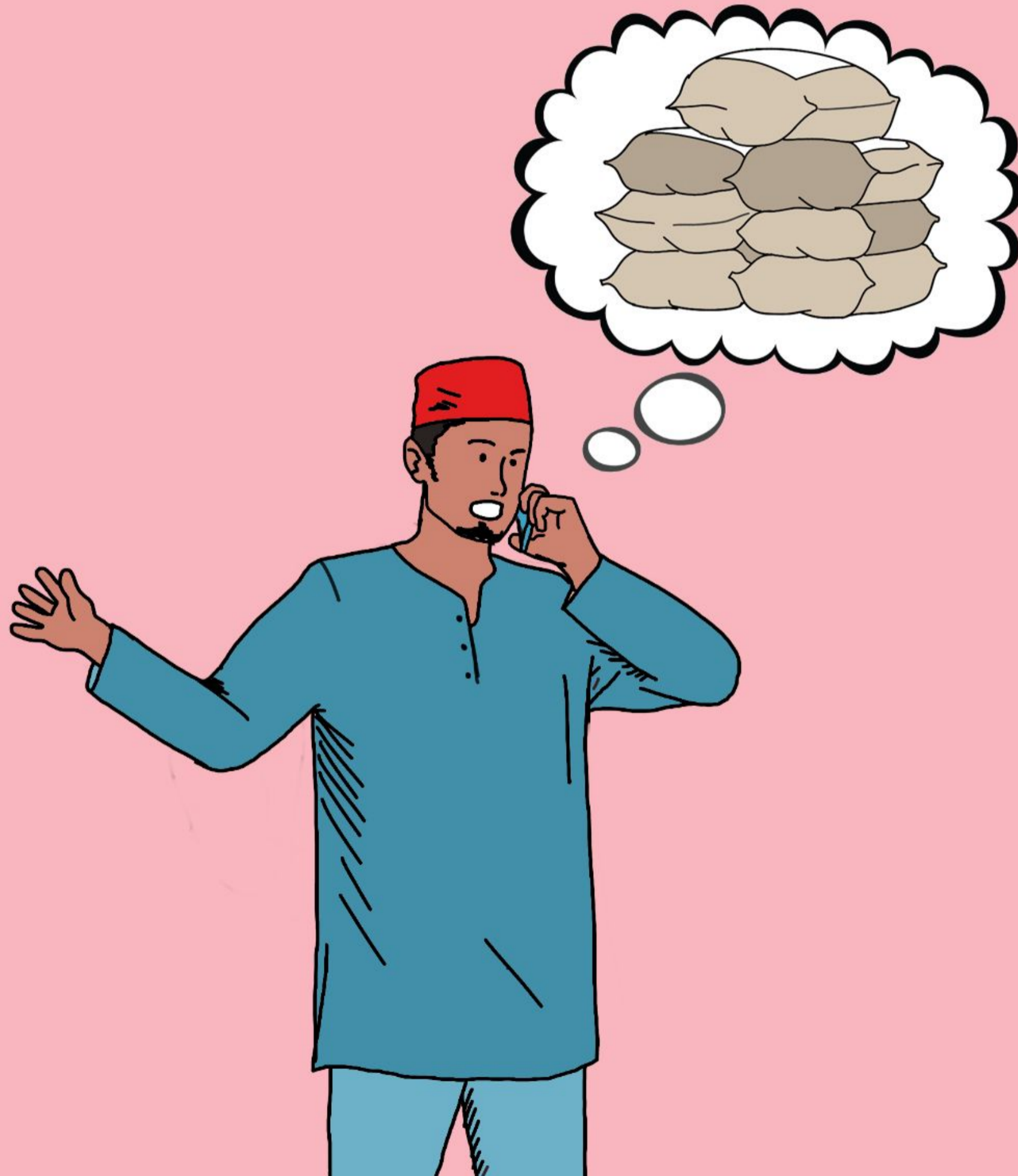


Laabiji hokkuki jawabu: godfo be godfo, akwati bojji, hedi laabi koosol daande, laayi waya jee caahu, sawral bee

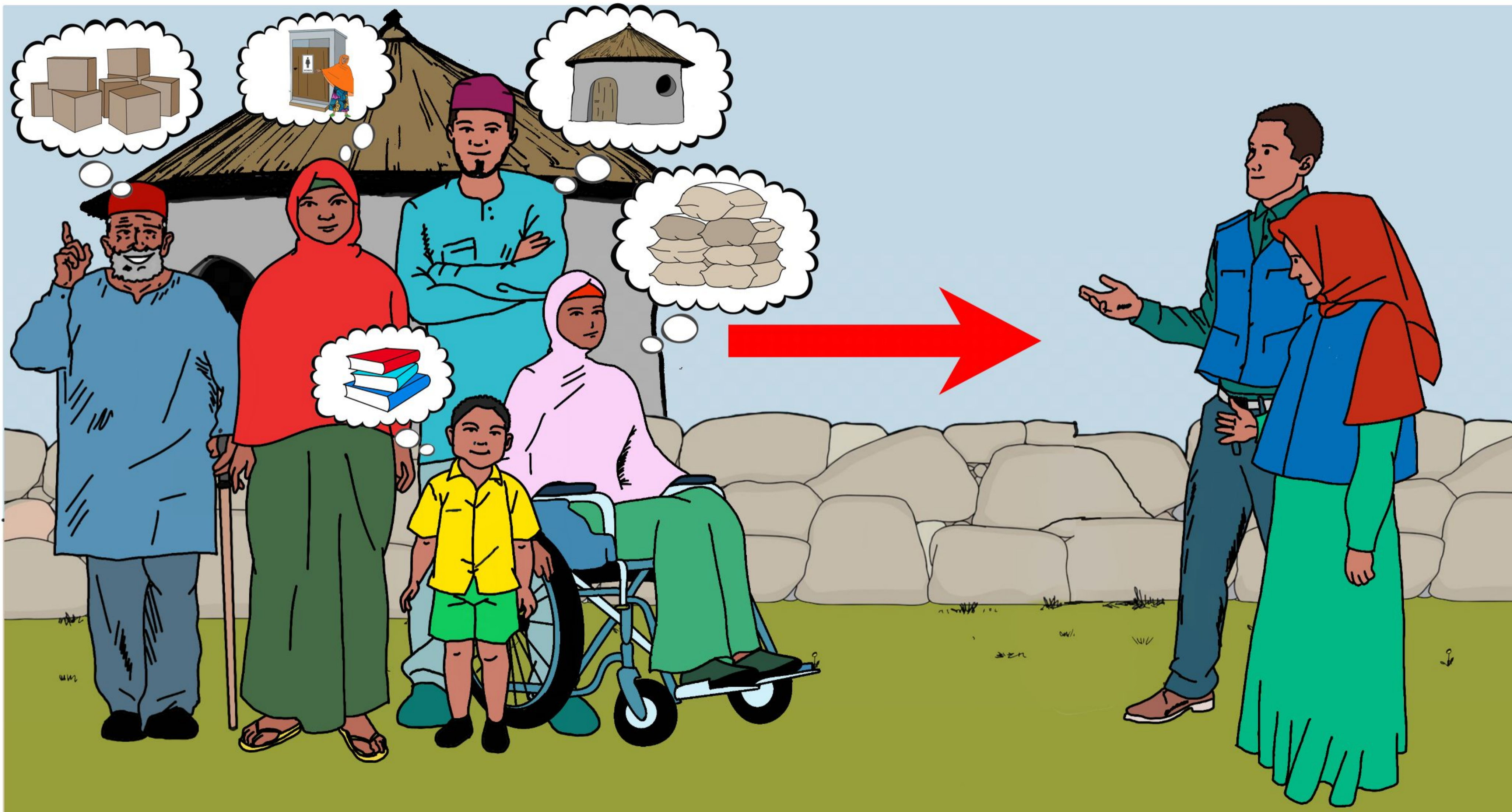
ummatare wuro



Laabiji hokkuki jawabu: goddo be goddo, akwati bojji, hedi laabi koosol daande, laayi waya jee caahu, sawral bee ummatore wuro



Kala godfo mo woni nder wuro fuu waawan wada boji maako ko hokka jawabu, laaray dow ko o` moy on



**Bojji bee jawabuji do wada haa babal kinsdam bee babal sirru**



Fuu boji bee jawabuji d'um sirru on



To a` bingel debbo on, budurwa ko debbo manga a` do mari bojji teddiidum ko a` yidi wadugo, a` suptan woldugo bee huuwoowo debbo



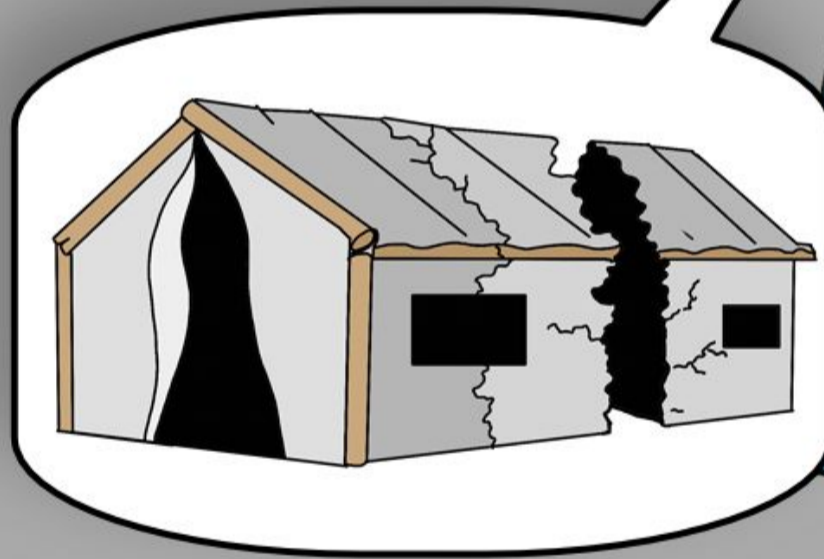
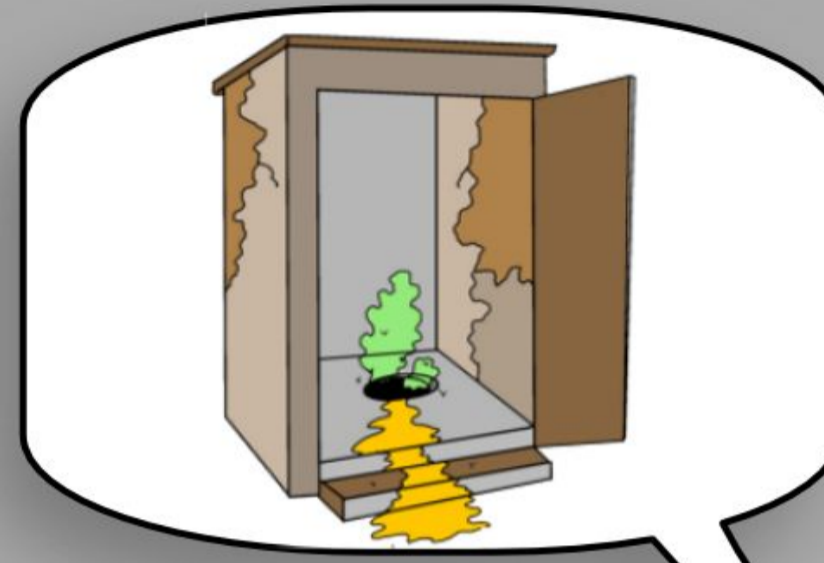


To bo bojji ma dfo mari haaje wi`ditol, dum waday nder laawol sirru nden bo be jaabay ma nder wakkati



Be jaabay boji nder wakkati

**Complaints and  
Feedback Desk**



Ummatore nasti naa ma nder taskaramji kuude



On do mari ko on ngadata mawɗum dow taskugo kuude ko be ngadata nder wuro mon



Kala walliinde innu aadama fuu caahu on. Toh be tefima a njeena, ko a hokka ceede, hundeji feere ngam waylol babal, nyamdu, kare kuude feere ko kuugal feere, a` wulla goddo man ha goddo mo a` yerdi ko kungiya ko a` yerdi



A` do mari hakke be yetcca ma kuude mballa innu aadama ko be ngadata haa nukkure ma, bee no be suptata yimbe botira bee kuude man



Useni a` wulla to huuwoowo mballa innu aadama do wada ko hanaday. Be kiitataa ma ko be hadama mballa to a` wadi

non



Mindfo hoosa ɲaamuki nedɗaku be soynde hakkilo bee teddaalu, ngam man, a` wulla ɗum to ɗum fe`i nder wuro mon

