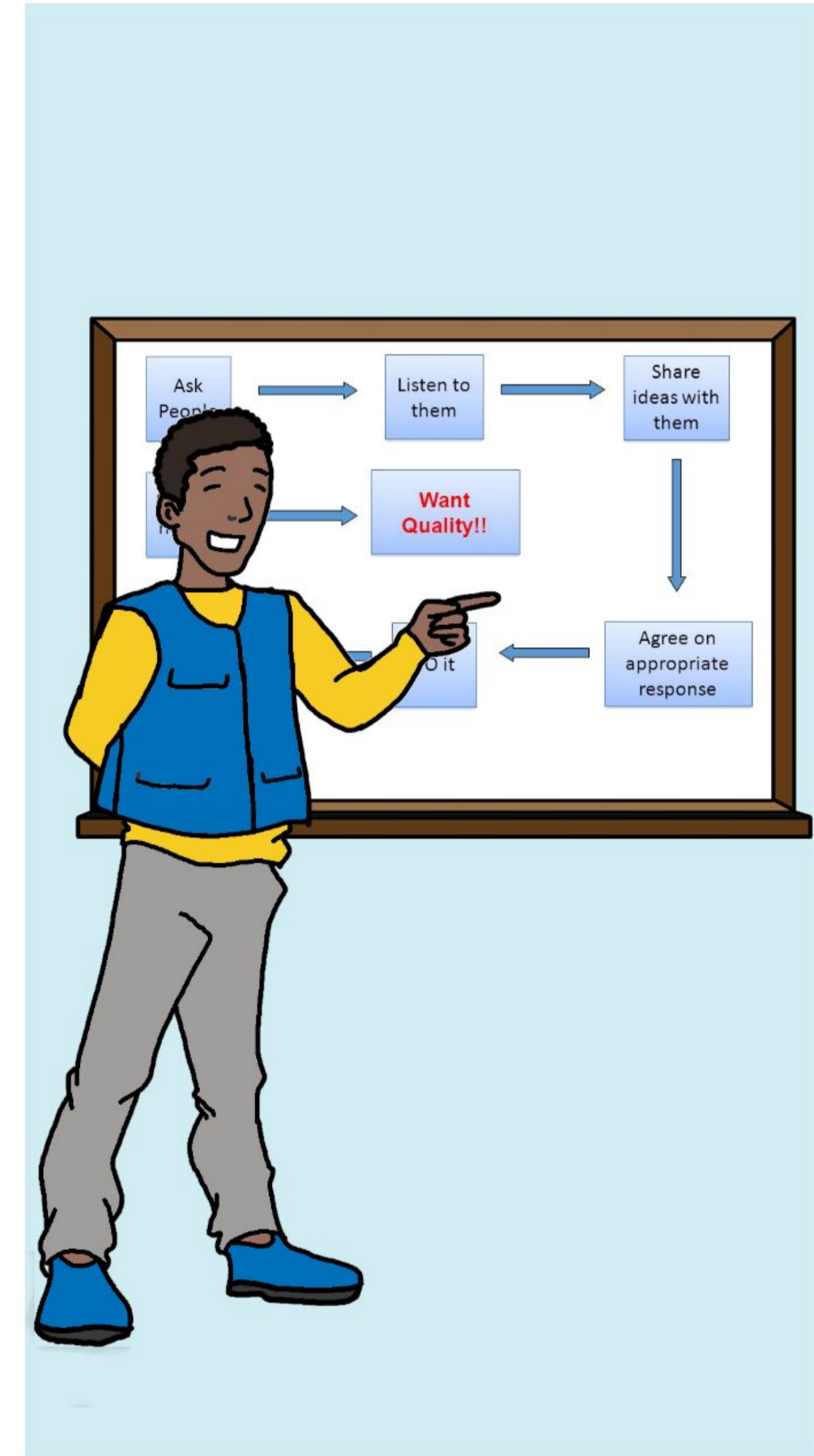
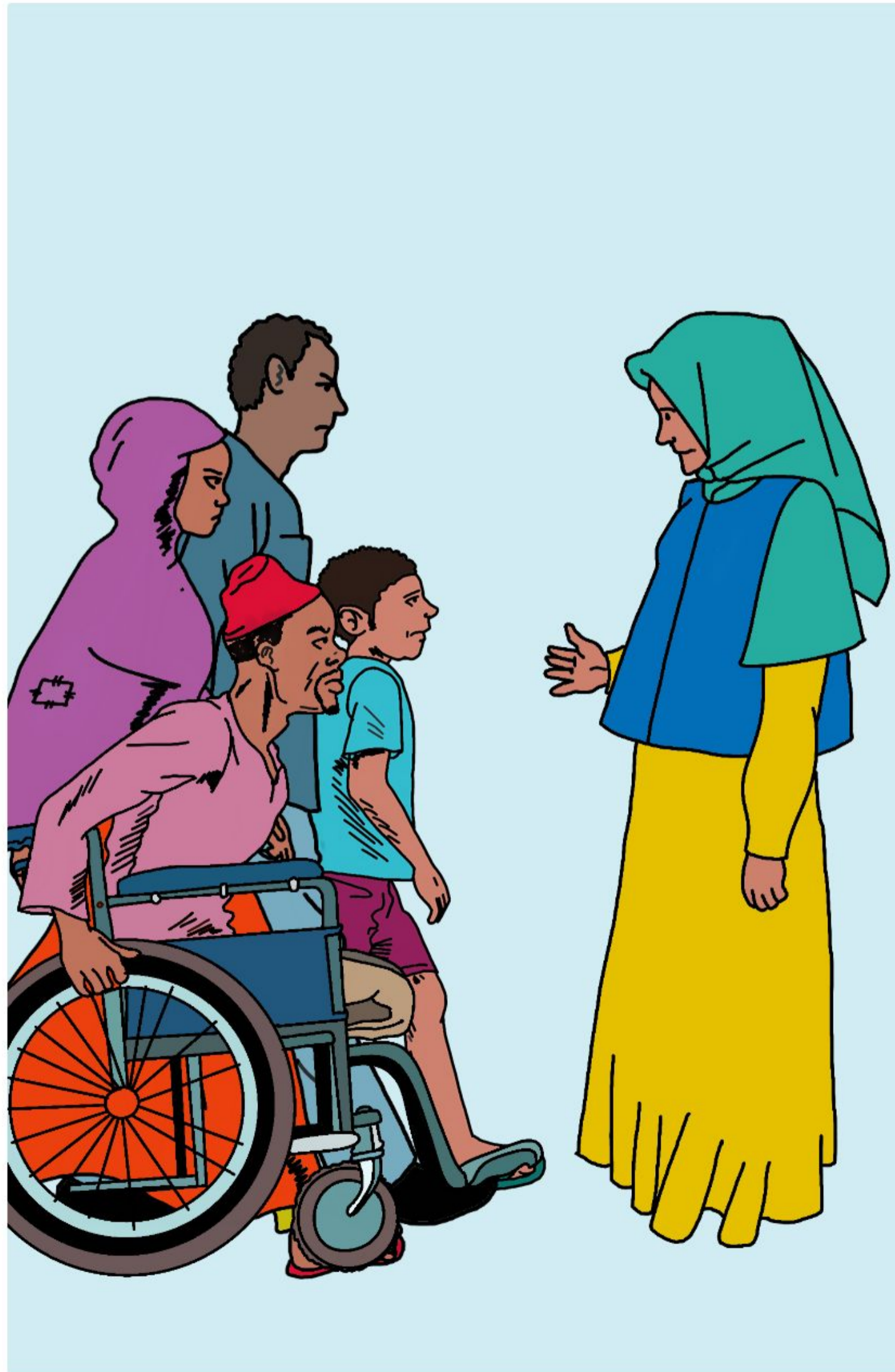
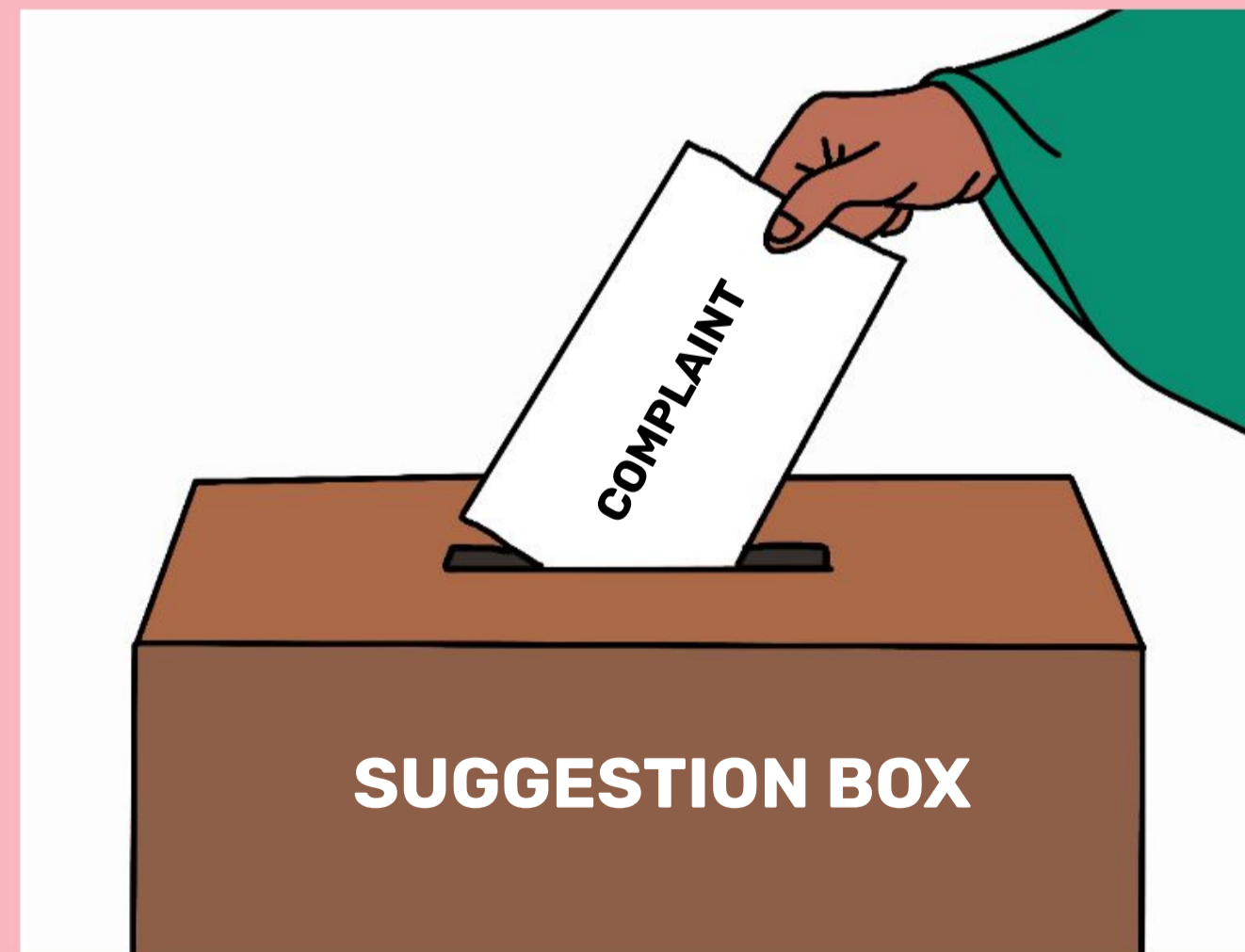


Vela damuwaha antara vela labaré aḍaba zlalava duksá ḡane ḡalapa zliya, zharanahe antara vela mélé gé zlama klawa an
kya uḡḡula nda slera mélé gé urimagwé mtu gé hyaba kaḡa hale



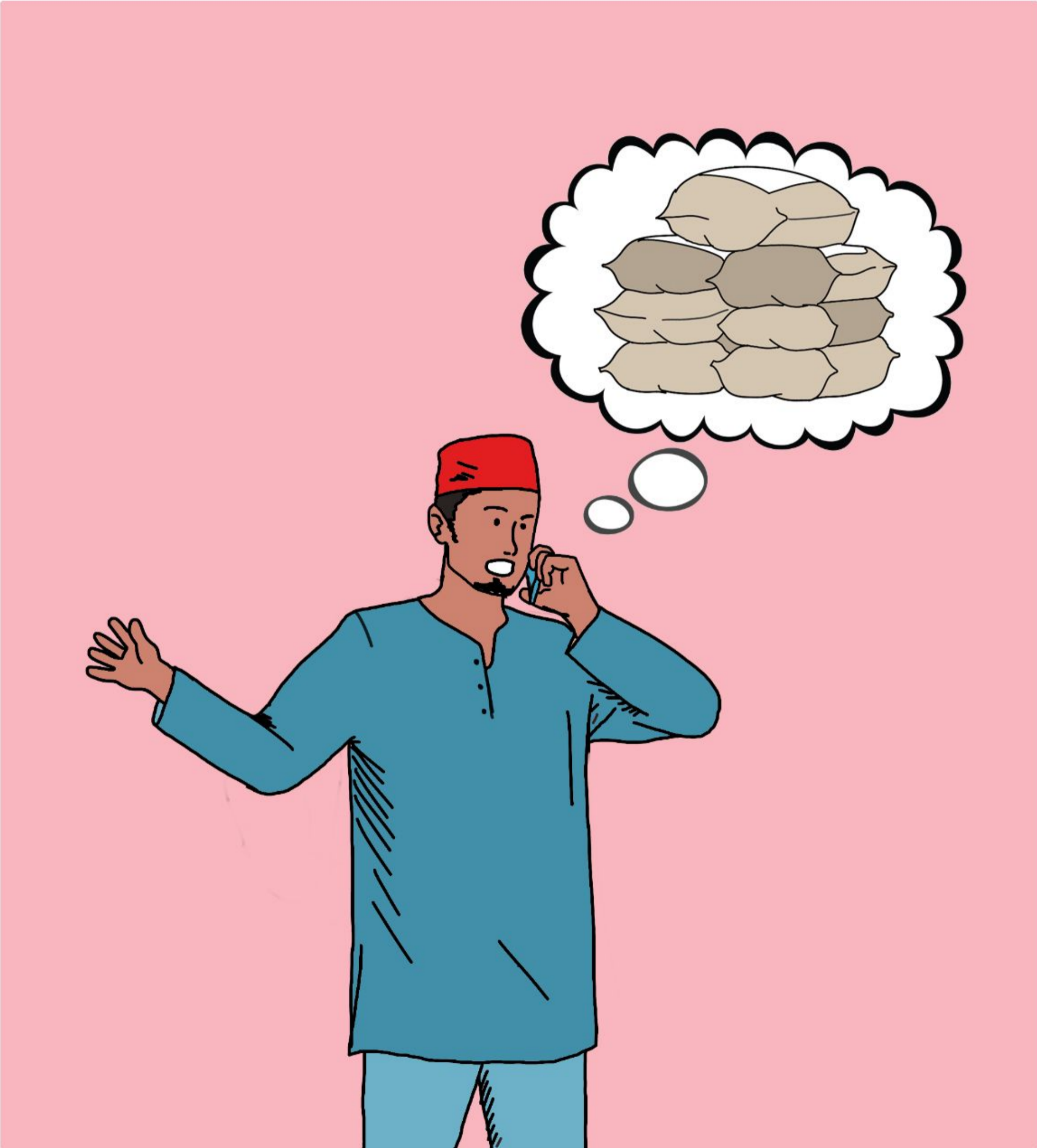
Dalapaha vela labaré adaba zlalava duksá: anirare gé ura, an kya nakwati zliya damuwaha, an kya damala kwara an kessa, an kya laya-wayaya da an dey antara damala an zlama klawá



Dalapaha vela labaré adaba zlalava duksá: anirare gé ura, an kya nakwati zliya damuwaha, an kya damala kwara an kessa, an kya laya-wayá dfa an dey antara damala an zlama klawa

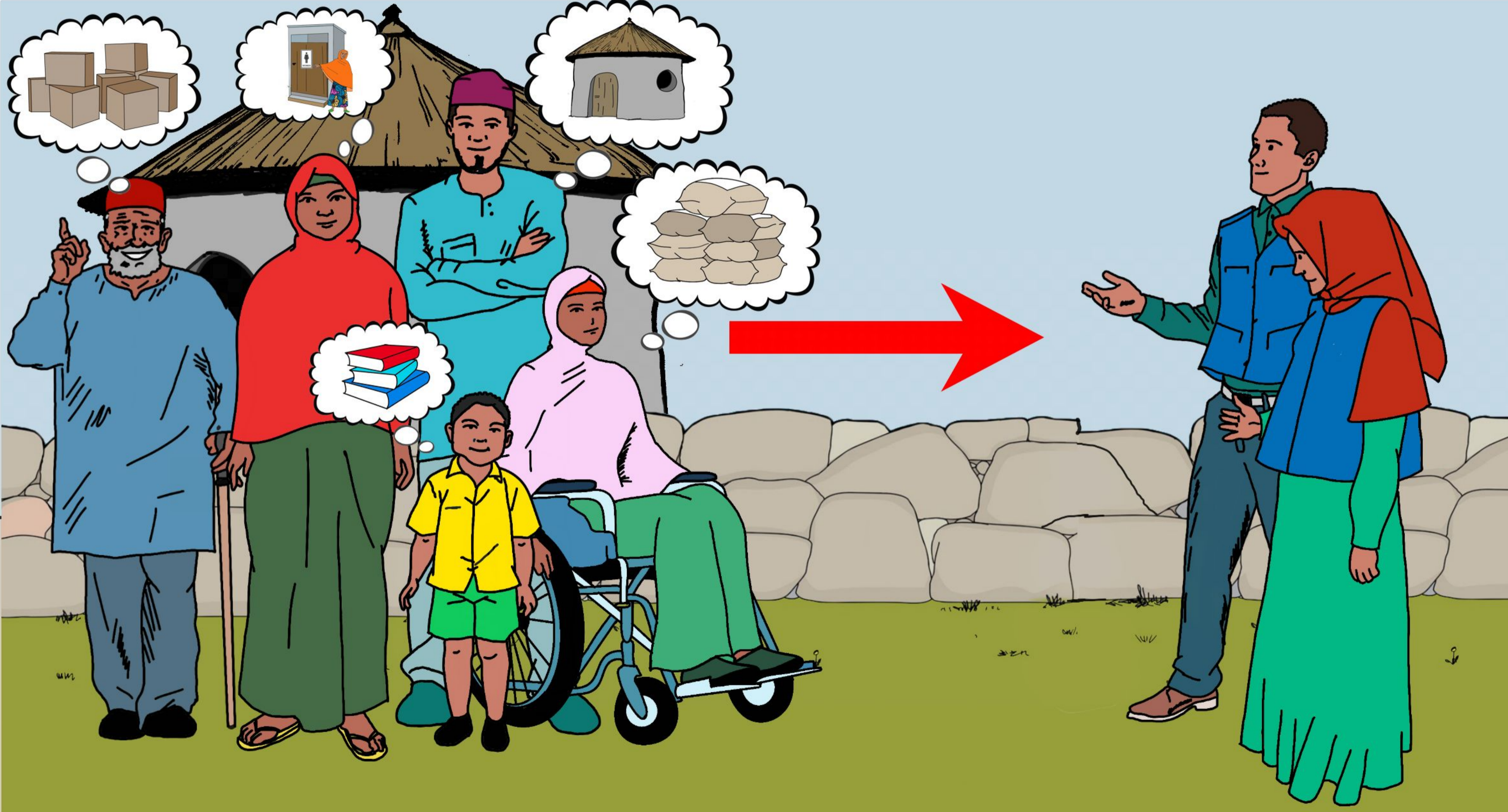


**Dalapaha vela labaré adaba zlalava duksá: anirare gé ura, an kya nakwati zliya damuwaha, an kya damala kwara an kessa,
an kya laya-wayá dfa an dey antara damala an zlama klawa**



Ko mar gé zlama klawa anaba ndanda damuwa ne mtu anaba vela labaré aɗaba zlalava duksá, ɓáaka elva jiba urara itare

mtu ndra nja tare



Vela damuwaha antara vela labaré aḍaba zlalava duksá a jare am mátu aṅkwa nashelire ba shagera



Baɗumma damuwaha na a ziyate nde antara labaré aɗaba zlalava duksá ɗanna a nja a ban nashelire



Ma seke ká egdzere-egdzakwa, gyale mtu mandala njwasha ká naba damala damuwanja gé dada slera mla ura-múksé

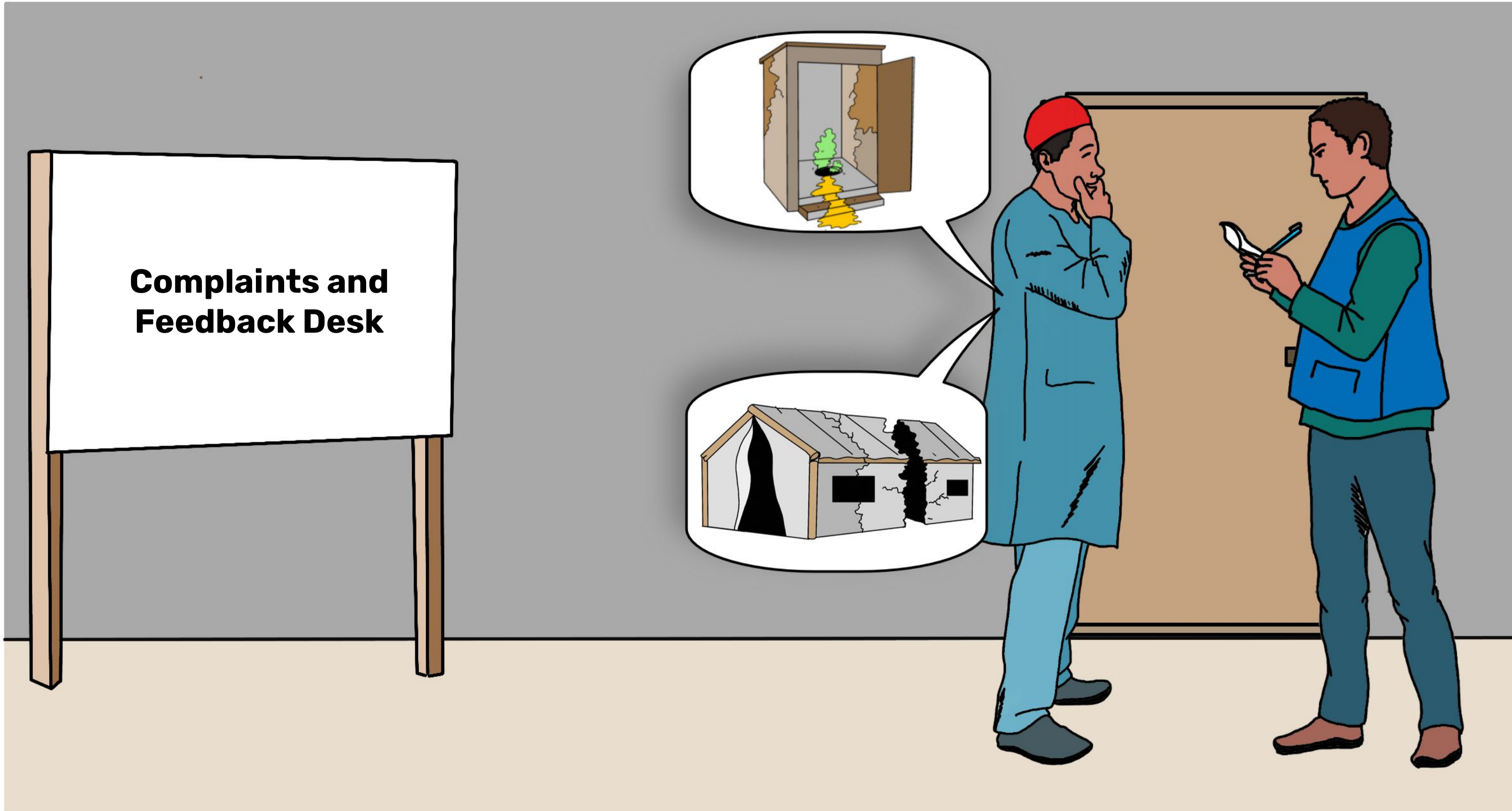
nanna



Ma seke damuwa ɗanna a kátá maga bincike, anuga a jare a bam slera nashelire antara aba atuwa watsire



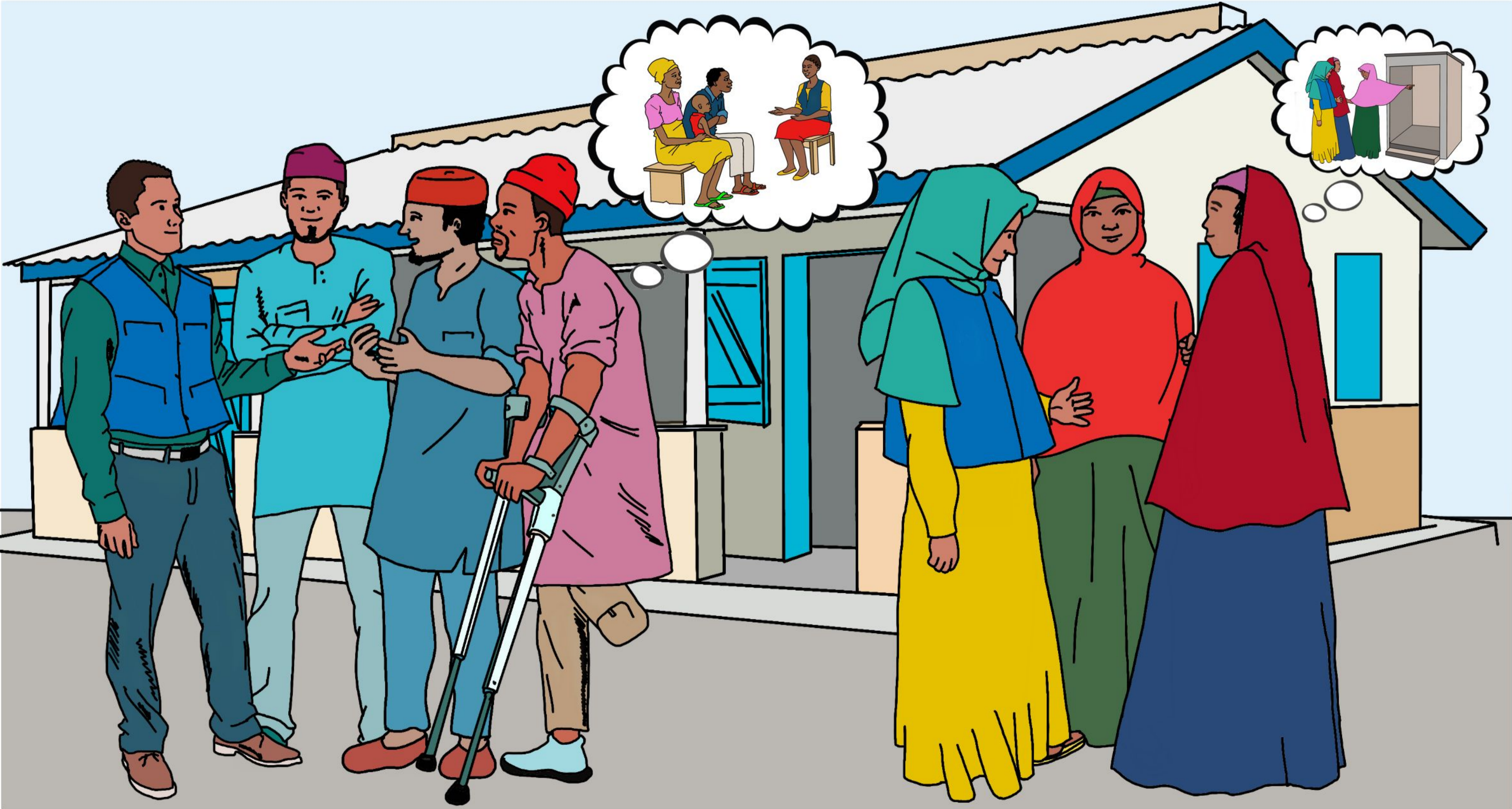
Damuwahaŋa ŋanna anuga a de maga nde duksá atire aba atuwa watsire gé sha mla



Zlama kse shagera tá aṅkwa am sarta kabava gé maga jiba slera ḡanna



Ankwa slera ɲa mandala gé maga jiba duksáha na anaba mla gé zlama kse kúré



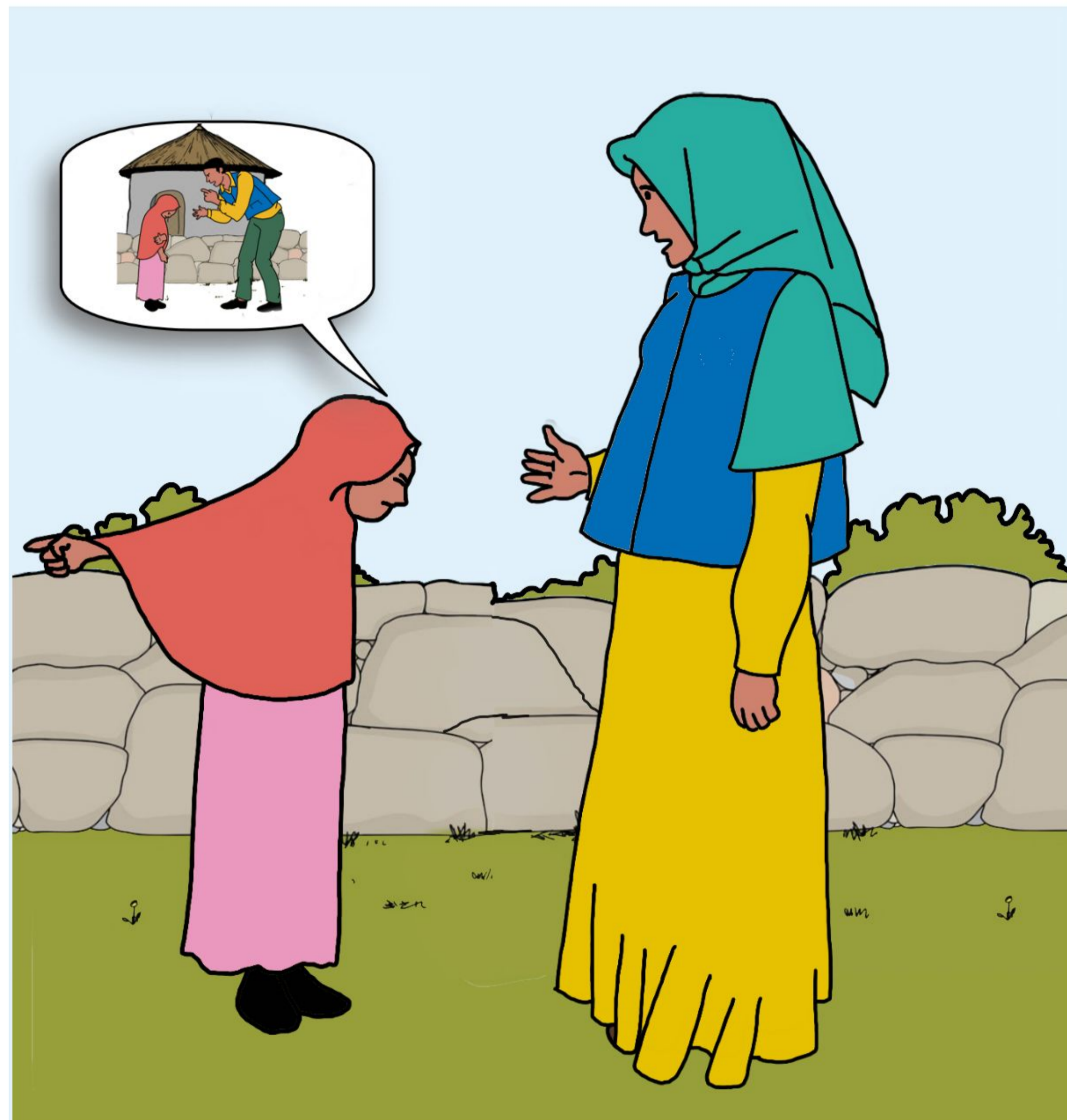
Badumma mla nda maga slera mla gé urimagwé a ban dey báaka nde a biya kwaba. Ma seke anƙwa ndahana tá datsa gwarava, kwaba mtu ko mar gé jiba duksá gé mbedá slide, dafa, kazlanaha mtu ko mar gé jiba mla, shagera ká basha jiba una gé ura mtu gé kungiya na faktarfe atikwa na



Zlaya-zlaya ŋa diyase jiba slera mla nda kungiyaha mla gé urimagwé am slálá kúré, antara ŋalapaha na aɗabava gé sha jiba mla ŋanna



Tazlaŋa ba-basha ma seke aŋkwa nda maga slera mla na lake halaha tare na. Báaka nazu a jare an ká aɗaba basha jiba
una ane zlage a jakfuka nde mla aɗaba ŋane



Da báaka a ga shoyya an jare mara ndzedá abseliré antara lakira halaha, aɗaba una, tazlaŋa basha jare jiba una am slálá kúré

