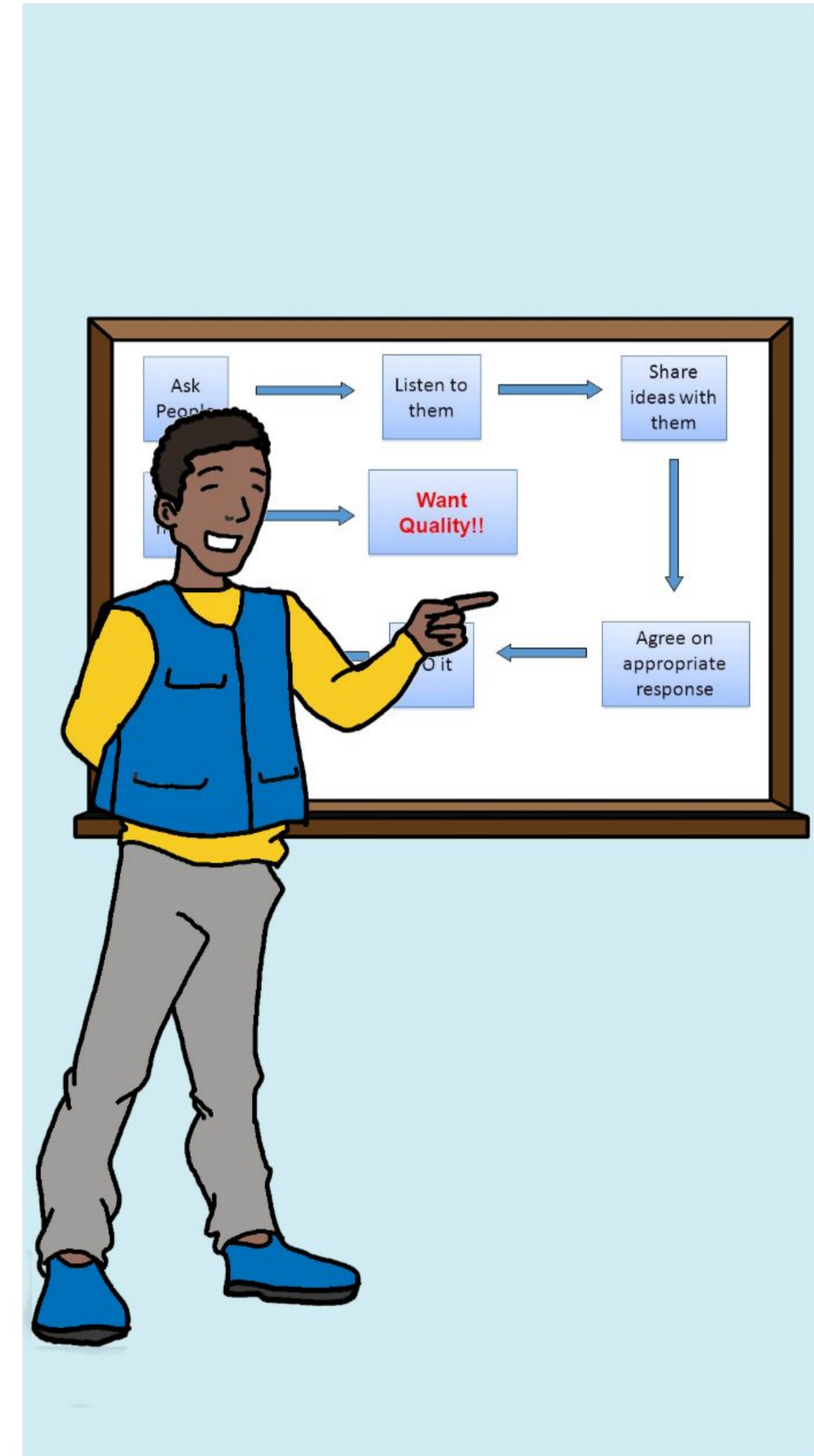
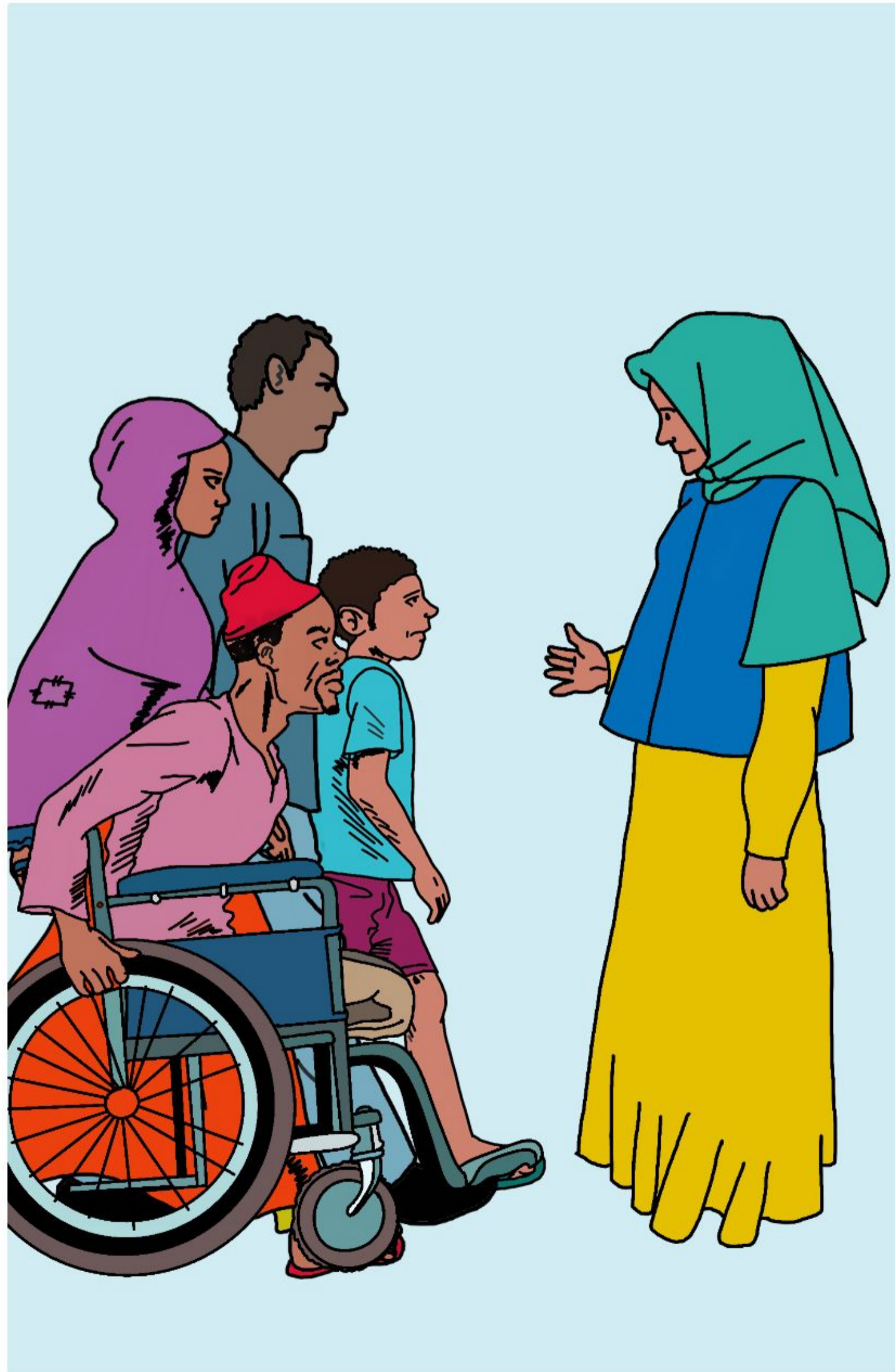
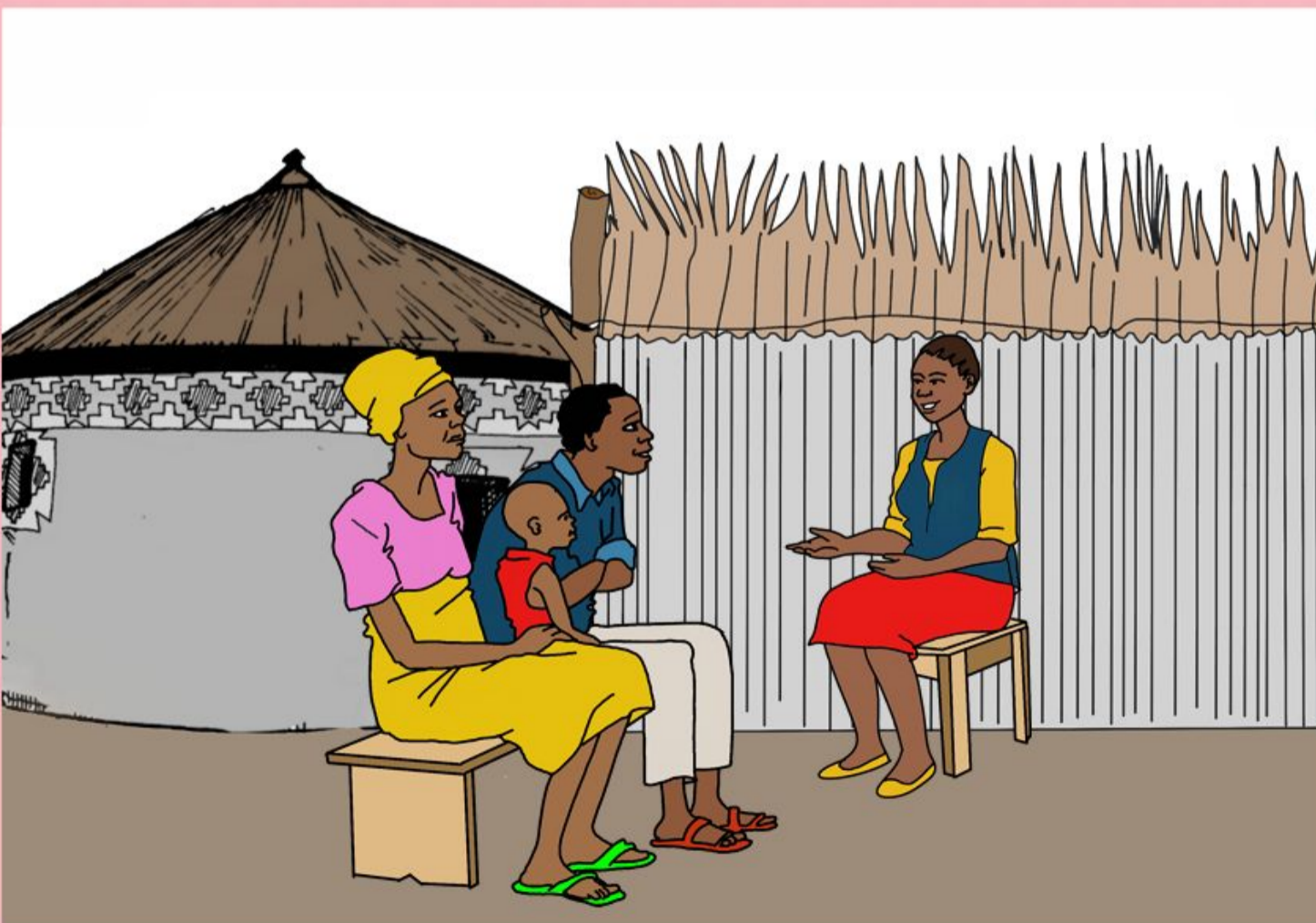


Lagur hu ngununi bada dliri shadiba naja ngu lagur dliri, iu thlir arkir bada hamtsini shadiba anu mulmu arkra thlir
nur mjir bar udzu, bar udzu nagum akiya mai jili iu hankal nagum



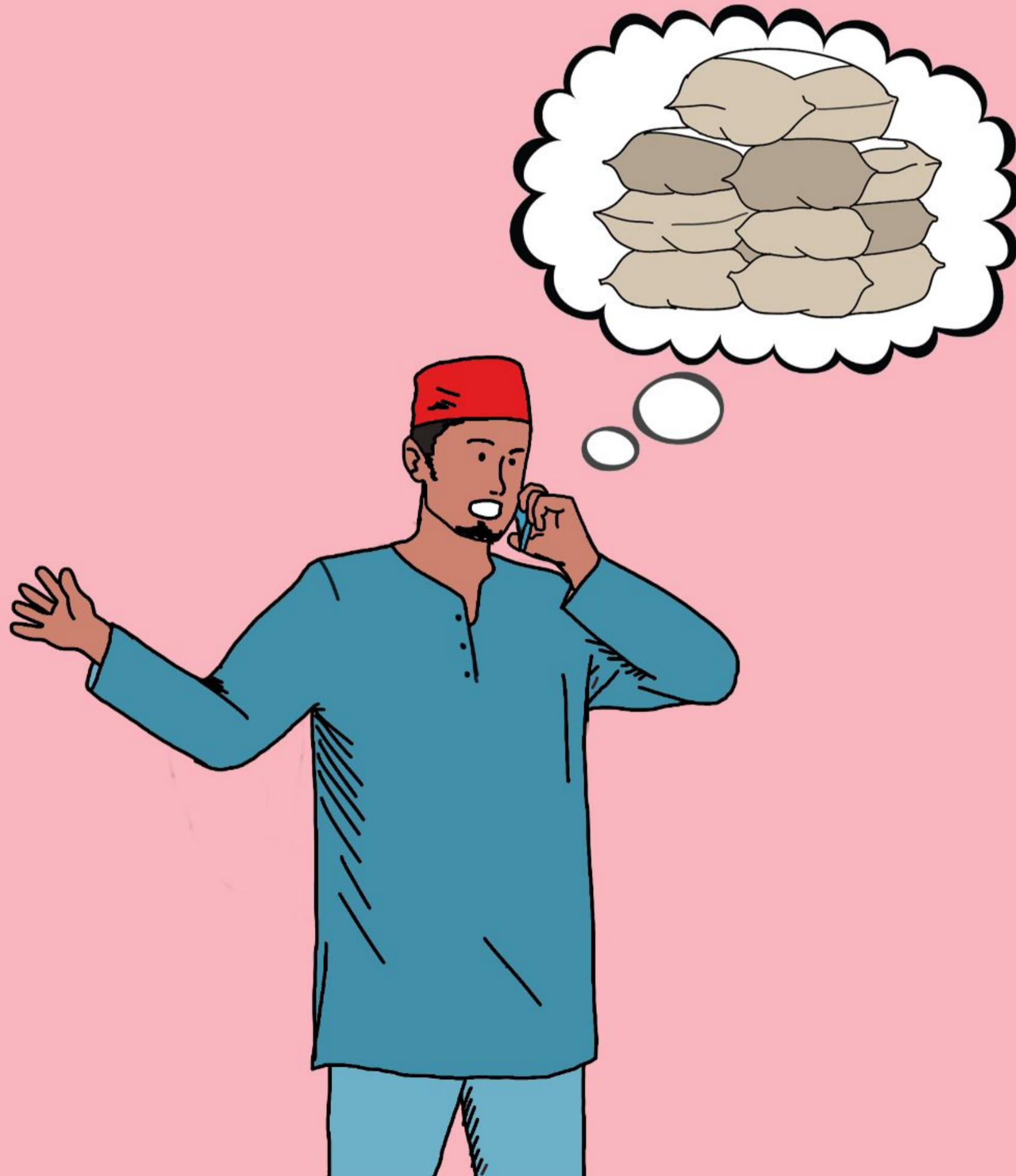
Lagu yer nur hamtsini shadiba: ngwa aga ngwa, iu thlir aga akwati nur hu ngunḡuni, hu dahu aga sur hun ndir, lamba
nga lang, sawari ara mulmu



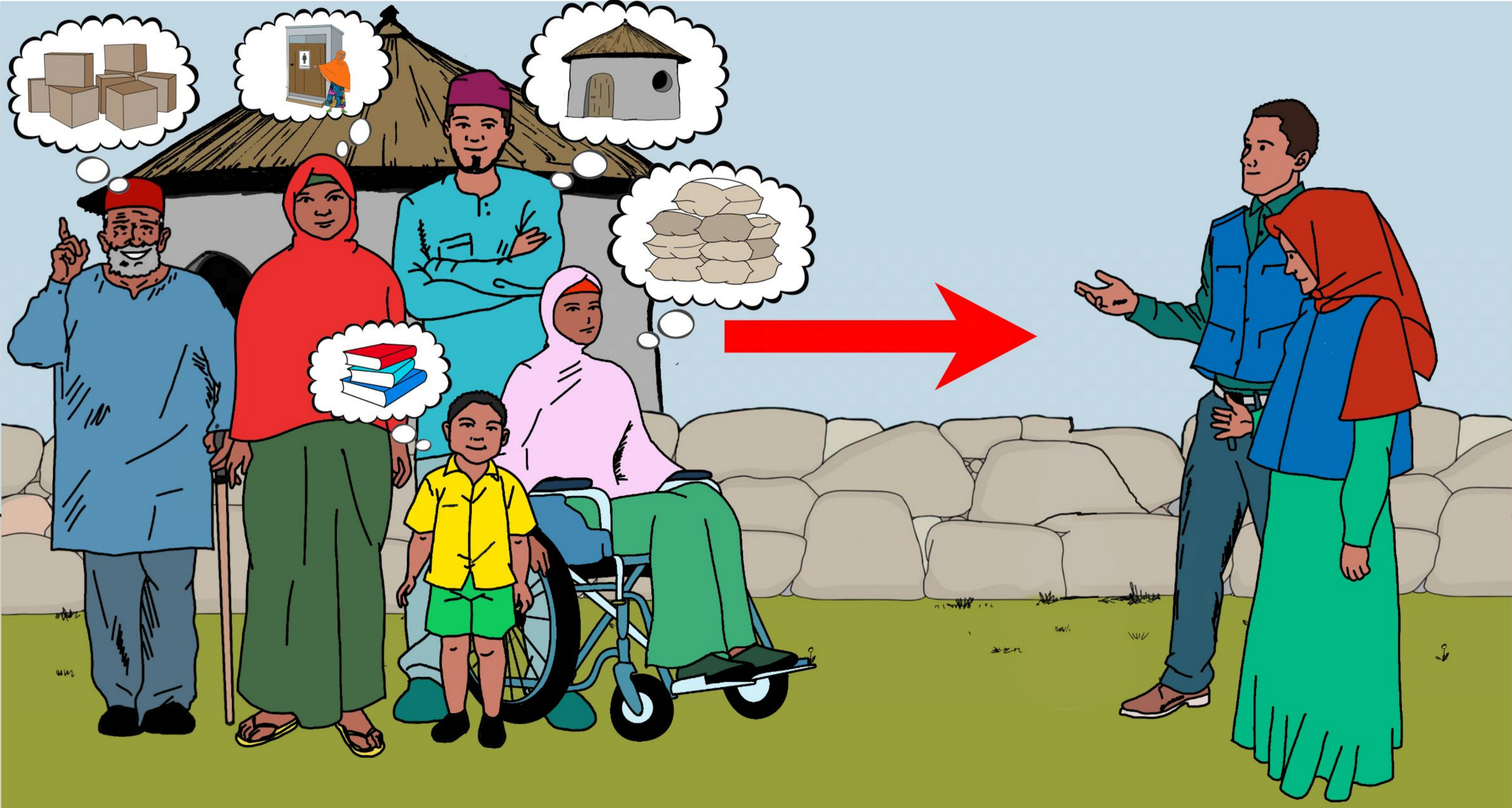
Lagu yer nur hamtsini shadiba: ngwa aga ngwa, iu thlr aga akwati nur hu ngunḡuni, hu ḡahu aga sur hun ndir, lamba
nga lang, sawari ara mulmu



Lagu yer nur hamtsini shadiba: ngwa aga ngwa, iu thlr aga akwati nur hu ngunguni, hu dahu aga sur hun ndir, lamba nga lang, sawari ara mulmu



Kowani mdu akwa mulmu naja acittu hu ngunguni ginda akiya mai hamtsini shadiba, ko naja ngu wa



Ngunguni bada shadiba mji vur iu ara ivi lapiya bada iviku aga ashir



Ca ngunungi bada shadiba naja sur ashir



Ma nagu mala, kushu akiya mai mala digal aga jili ngunḡuni kuku aga ashir, Nagu acitu ga nḡir aga mala kuku vur iu
thlir bar udzu

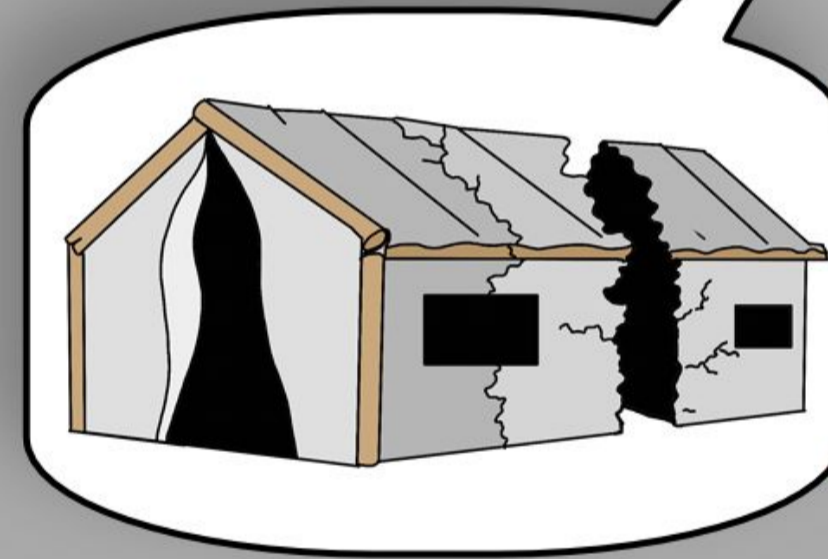
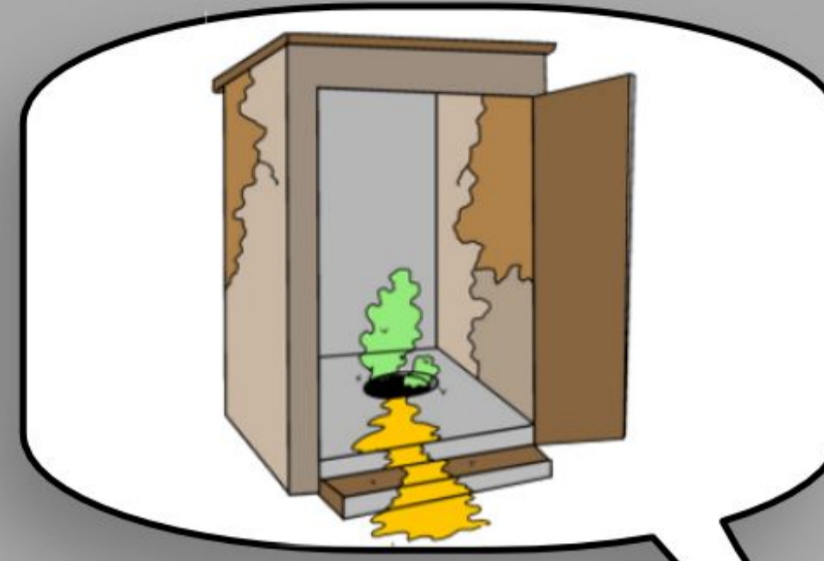


Ma ngunguni ginyi ayu papaya, mji acittu iri u lagu aga ashir baɗa mji acittu shaɗiba u latu



Mji ara nanyi shafiba u latu

**Complaints and
Feedback Desk**



Mjir mulmu nanda akwa mjiku ara fia thlir ari u lagu



Nagu aga thlir nur iu ma mji vur fia thlir u lagu kuku ga tsukwa mulmu nyi



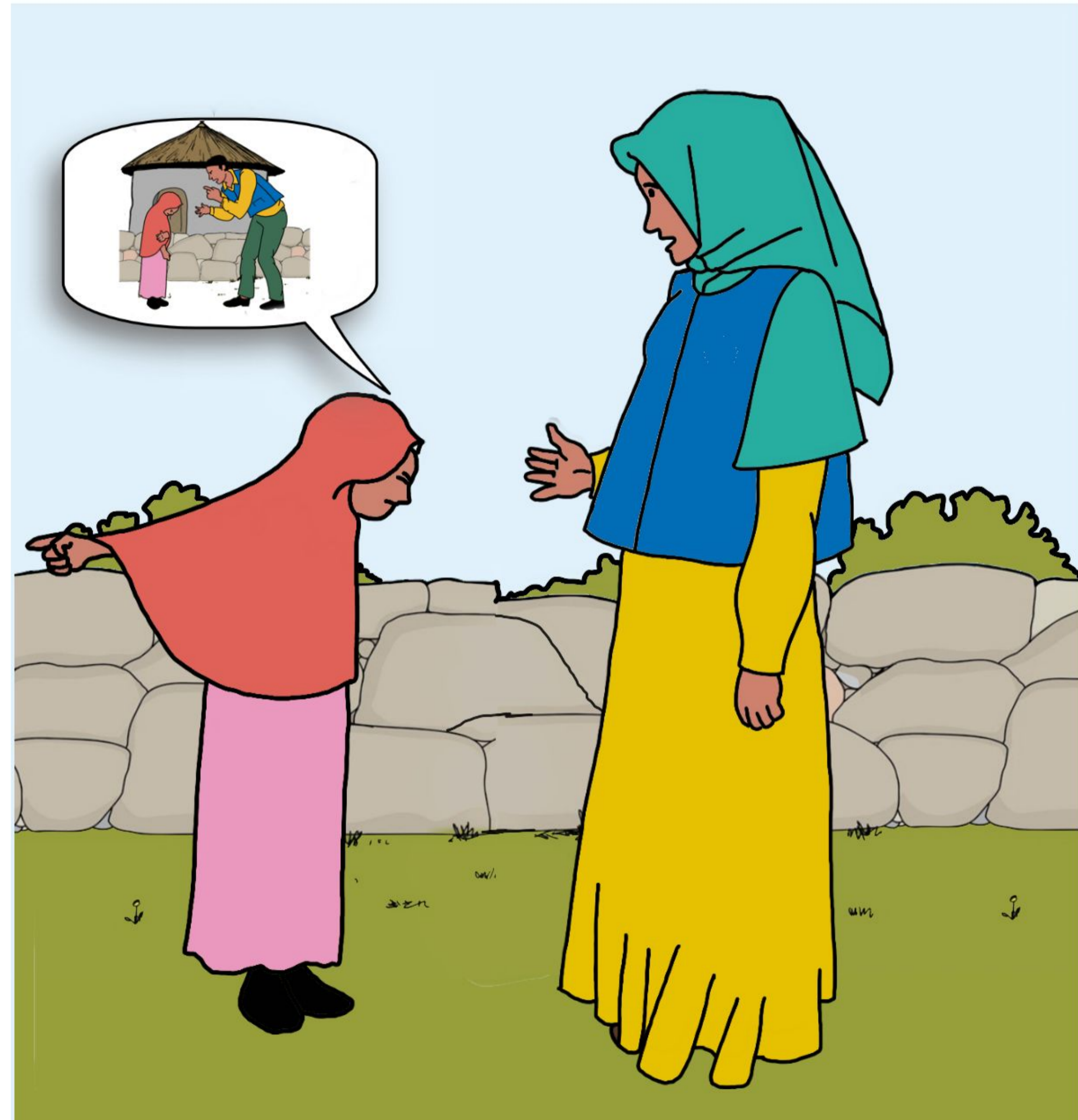
Ca thlir bar udzu naja lang. Ma mji ga ja'u kuga iu fashili, hamtsini u'u akiya mai jili su nagum digu pubila ii, sursim, kari yer akiya mai thlir nagum yer, kuga wula mduna anu mdu nagum akiya mai ivir iu thlir kuku digu a hungiri duri



Nagu aga cirkur nur thlia labar arkra thlir bar udzu u mulmu nyi, bada tsu lagu mji vur caduba mjiku ara dliri thlir yer ari



Manki wula ma mjr iu thlr bar udzu a iri su dumi. Mji ara mdubu mai akiya mai nkani bar udzu ma ga iu suku



Na'íya vur huri su ɗumi yer aga dunama, manki wula jili suku ma a irkir u mulmu ɗyi

